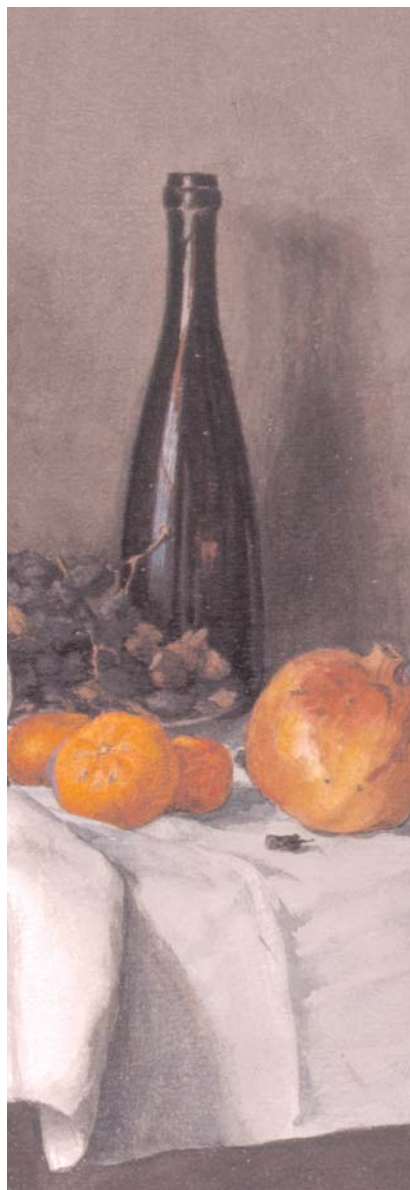




THE WALTERS ART MUSEUM  
2005 ANNUAL REPORT





## A MESSAGE FROM THE DIRECTOR

---

## EXHIBITIONS

---

## ACQUISITIONS

---

## DONORS

---

## STAFF

---

## VOLUNTEERS

---

## BOARD OF TRUSTEES

---

## FINANCIAL INFORMATION

---

## INDEX OF ARTWORK



# A MESSAGE FROM THE DIRECTOR

DEAR FRIENDS:

This has been an exciting year for bringing art and people together at the Walters Art Museum. FY2005 began with the opening of a new gallery that substantially enhanced the museum's international standing in the arts of Asia: The John and Berthe Ford Gallery of the Art of India, Nepal, and Tibet. The former restaurant space in the Hackerman House became, in July 2004, the permanent home for this stunning collection that opened as a temporary exhibition, *Desire and Devotion*, in late 2001 and subsequently toured internationally. Generations to come will owe a profound debt of gratitude to the Fords, who personify the highest discernment in collecting and the most generous and enlightened philanthropy; indeed, John and Berthe have demonstrated their devotion to the

Walters in enumerable ways for more than thirty years.

Our fall exhibition, *The Road to Impressionism: Landscapes from Corot to Monet*, was not only a visual delight and critical success, it was a demonstration to us all of the extraordinary strength of the Walters' own Barbizon holdings—perhaps the finest of any American museum. And as an added bonus, we discovered in our own storage, as part of research for the show, a Corot and what may be a Courbet! For this we thank the Women's Committee of the Walters, a tireless group of museum supporters who sponsored the show.

But what could possibly top the star of our spring show, *Stubbs and the Horse*? There, on the end wall of our second gallery, the grandest and stateliest in the museum, rose the magnificent *Whistlejacket*, the greatest Stubbs of all, and the most beloved painting in the

National Gallery, London. It was as if the artist and the building's architect, William Adams Delano, had conspired to find the most perfect union of wall and canvas. *Stubbs and the Horse* was not only critically acclaimed, it was a hit with many in our region who love horses, from breeders and adult riders to scores of children who were then learning to ride and drew whimsical pictures of their own horses in the visitor comment book. A special thanks goes to our lead sponsors, Brown Advisory, Fancy Hill Foundation, and Howard and Martha Head Foundation for helping us bring *Whistlejacket* and the many amazing paintings by George Stubbs to Baltimore.

Two unusual opportunities for collections sharing fell in FY2005. Masterworks of medieval art—including America's finest Byzantine icon (St. Peter)—began an extended visit to our

medieval galleries from the galleries of Dumbarton Oaks in Washington, D.C., as that facility was undergoing a major renovation. This was an example of “strength to strength,” for the benefit of our visitors. Also to their benefit, but indirectly, was the extended loan of 55 works of medieval art from the Walters to the Frist Center for the Visual Arts in Nashville, Tennessee, which came to a close in August 2004. In response to this three-year loan, the Frist supported curatorial and conservation programs here at the Walters which we otherwise could not afford ourselves.

Finally, I want to draw attention to a compelling juxtaposition of exhibitions that closed out the year: *The Essence of Line: French Drawings from Ingres to Degas* and *Pearls of the Parrot of India*. Both were collaborations, and both traveled. The former brought together the finest French drawings of the Walters and the Baltimore Museum of Art—with an enormous scholarly catalogue and its own website—and traveled on to Birmingham, Alabama and Tacoma, Washington. Both the Walters and the BMA venues of the show were sponsored by the Von Hess Foundation and the National Endowment for the Arts, while the Walters exhibition received support from our dear friends Jay and Stephanie Wilson, Peter and Millicent Bain, and Eleanor Abell Owen.

And the latter, another great project supported by the Carpenter Foundation, brought together 29 surviving full-page illustrations, as well as ornamental pages and the cover, from

one of the most sumptuous manuscripts ever produced by the Mughal court of India—21 from the Walters and eight from the Metropolitan Museum of Art in New York, where the show went after it closed in Baltimore. All three museums—the Walters, the BMA, and the Met—were able, through these creative collaborations, to bring quality art experiences to their visitors which none could have so fully achieved alone.

This has been an exciting and successful year for the Walters, and as it drew to a close, we found ourselves on the threshold of reopening our renovated and reinstalled Palazzo with our magnificent holdings of Renaissance and Baroque art. And we did, in October 2005, on time, on budget, and on beauty!

Looking even farther to the future but firmly anchored in FY2005, was the

work of our Strategic Expansion Committee, chaired by Andrea Laporte. The committee was formed as an extension of our FY2004 Strategic Plan, in recognition of the fact that the Walters is facing critical space challenges in its existing buildings for collections display, both permanent and temporary (thus, the Ford Collection supplanting the restaurant), for art storage, our conservation lab and library, for staff offices, and for educational and family programs. The first major outcome of the committee’s work was realized in December 2005; namely, the purchase of 100 West Centre Street from the Maryland Historical Society. Now, looking forward, we have many attractive options to consider.

Gary Vikan,

Director



# EXHIBITIONS

## TEMPORARY EXHIBITIONS

### The John and Berthe Ford Gallery of the Art of India, Nepal, and Tibet

*Opened July 3, 2004*

Ninety-one works of art were installed in the new gallery for the art of India, Nepal, and Tibet. The gallery is named for John and Berthe Ford, and most of the artworks on view were acquired by them; each year objects from their collection become part of the permanent holdings of the Walters. Nearly all of these works of art were made for places of worship—from Indian stone temples honoring Hindu gods to Tibetan Buddhist monasteries where revered teachers gave lessons in secret techniques of meditation.

### The Road to Impressionism: Landscapes from Corot to Monet

*October 3, 2004–January 17, 2005*

The innovations made by the painters associated with the Barbizon school led to the development of Impressionism. The exhibition explored the wide range of the Barbizon artists (including Théodore Rousseau, Jean-François Millet, Camille Corot, and Charles-François Daubigny), from forest scenes to stormy seascapes, from scenes of bright sunlight to atmospheric moonlight, and from moving pictures of peasant hardship to humorous depictions of leisurely boat trips. It focused on the importance of place for the

Barbizon artists both in terms of their outdoors paintings and their studio works inspired by the process of memory. Drawn from the Walters' collection and complemented by loans from the Baltimore Museum of Art, the exhibition presented 70 works of art, consisting of 40 paintings, 14 drawings, 12 prints, and four artists' palettes. There was also an interactive gallery. *The Road to Impressionism* was generously supported by the Women's Committee of the Walters Art Museum.

### Stubbs and the Horse

*March 13–June 5, 2005*

George Stubbs (1724–1806) was a versatile artistic genius whose work includes paintings, prints, and detailed anatomical studies. His many images of horses show a classical beauty, expressiveness, and heroism previously reserved for human figures. This was the first major exhibition to focus on this central theme in Stubbs's work, from refined portraits of race horses to dramatic scenes of horses attacked by lions in the wild, and celebrated the artist whom many consider to be the greatest painter of horses in the history of art. The exhibition of 61 works included 28 paintings, 18 drawings, three books, two enamels, and 10 etchings, mezzotints, and engravings. *Stubbs and the Horse* was organized by the Kimbell Art Museum, Fort Worth, in association with the Walters Art Museum, Baltimore, and the National Gallery, London. The exhibition is supported by an indemnity from the Federal Council on the Arts and the Humanities. The lead sponsors for the



Baltimore venue were Brown Advisory, Fancy Hill Foundation, and Howard and Martha Head Fund, Inc. Contributing sponsors included Audi of Hunt Valley, Maryland Horse Breeders Association & Dark Hollow Farm, Maryland Saddlery/Hope Birch & Stephen Plakotoris, Miss Dorothy McIlvain Scott, and Mr. and Mrs. M. David Testa. Additional support was provided by Alex. Brown & Sons Charitable Foundation, Inc., Frank and Helen Bonsal, Richard and Rosalee Davison, Hannah and Thorne Gould, Legg Mason Trust, F.S.B., Sotheby's, and The Stiles Ewing Tuttle Charitable Trust; Mr. Stiles T. Colwill and Mr. Jonathan Gargiulo.

### Byzantine Art from the Dumbarton Oaks Collection

*April 27, 2005–TDB*

Dumbarton Oaks closed for renovation at the end of 2004. Its Byzantine collection (4th–15th centuries) ranks among the most



significant in the world. The collection also includes several pieces of western medieval art and examples of Greek and Roman art. For approximately 24 months, while the galleries at Dumbarton Oaks are closed, 17 of these objects—including ivory caskets and devotional panels, a relief statue, and a magnificent icon of St. Peter—are on view in the Walters' medieval galleries. The temporary installation of Dumbarton Oaks' objects at the Walters offers a rare opportunity to see these great collections side-by-side.

### The Essence of Line: French Drawings from Ingres to Degas

*June 19–September 11, 2005*

In collaboration with The Baltimore Museum of Art (BMA), this exhibition displayed 76 French works on paper at the Walters; at the same time, a similar num-

ber were on display at the BMA. The works selected demonstrate the remarkable range that distinguishes French art of the period: neoclassical landscapes through symbolist fantasies; sketches through highly-finished narrative scenes; poignant views of peasant life through bawdy caricatures and social satire. Those works conveying a sense of intimacy with the artist, whether preparatory sketches or personal jottings, were on view at the Walters, while drawings that from the outset were intended for the market were at the BMA. There is a catalogue combining the works from both institutions and a searchable online catalogue of the over 700 French works on paper in the collections of the Walters, the BMA, and the Peabody Art Collection: Maryland State Archives. The exhibition opened at the Walters, and traveled to the Birmingham Museum of Art (2-19-06-5-14-06) and the Tacoma Art Museum (6-9-

06-9-17-06). The exhibition was organized by The Baltimore Museum of Art and the Walters Art Museum with funding provided by The Richard C. von Hess Foundation and the National Endowment for the Arts. The Walters venue has been generously supported by Stephanie and Jay Wilson, Millicent and Peter Bain, and Eleanor Abell Owen.

### Pearls of the Parrot of India

*June 19–September 11, 2005*

This exhibition featured one of the most sumptuous manuscripts ever produced by the Mughal court of India, an illustrated edition of the *Khamasa* (Quintet of Tales) by Amir Khusraw, dating from ca. 1595–98. All 29 of the surviving full-page illustrations were shown, as well as ornamental pages and the cover. Twenty-one of the illustrated pages are part of the bound volume at the Walters (W.624), which was dis-bound for conservation, and the remaining eight were borrowed from the Metropolitan Museum of Art. Also on view were decorative and text pages from the manuscript and five other Persian and Indian manuscripts belonging to the Walters. Photographic wall panels helped explain the stories depicted. The exhibition was also on view at the Metropolitan Museum of Art October 14, 2005–January 15, 2006.

### MAEF Winners' Circle

*June 18–July 3, 2004*

Coordinated by the Maryland Artists Equity Foundation (MAEF), the Walters Art Museum, and the Maryland Institute College of Art, this juried exhibition featured approximately 30 works by current and past winners of MAEF scholarships.



## MANUSCRIPT EXHIBITIONS

### REVOLUTION!—Documents from the American War of Independence

March 27–July 3, 2004

This loan exhibition from a private collection in the Washington, D.C. area featured 14 extraordinary manuscripts and printed materials from the time of the American Revolution, including the letter that Paul Revere wrote to John Hancock asking for reimbursement for expenses incurred during his “ride,” and copies of the Declaration of Independence as printed in several states. Ten works from the Walters and a loan from the Winterthur Museum were also included.

### Illuminating the Word: Gospel Books in the Middle Ages

July 10–October 3, 2004

Among the great treasures of the Walters’ manuscript collection are several exquisitely illuminated Gospel books ranging in date from the 9th century to the 17th century. The splendor and opulence of these manuscripts reflect the reverence with which the four Gospels were esteemed. This exhibition explored the richness of medieval Gospel book illumination from the Latin West to the far reaches of the Byzantine Empire, tracing traditions and departures as Christianity itself changed and developed throughout the Middle Ages. A computer station allowed visitors to “turn the pages” of some of the books on view.

### Gathering Jewels: Japanese Illustrated Books from the Lionel Katzoff Collection

October 9, 2004–January 16, 2005

This exhibition presented 28 beautiful and diverse books of woodblock-prints from the collection of Lionel Katzoff. Dating from the 17th–19th centuries, the works included color and black-and-white picture books containing landscapes, figural scenes, and representations of birds and flowers; illustrated literature and poetry; and guides to painting. Some of the works were by such notable artists as Katsushika Hokusai and others were by a range of artists equally well known in their day, including Kawanabe Kyosai, Kawamura Bumpo, and Yoshida Hambei.

### The Early History of the Bible: Transmission of Sacred Scripture from Ancient Times to the Age of Printing

January 22–May 1, 2005

This exhibition showcased a recently donated 17th-century Torah scroll and looked at Old and New Testament scripture in different religious traditions. Eighteen objects, including scrolls, manuscripts, and printed books, helped to illustrate how other texts were added to the Torah over the centuries to form the Hebrew and Christian Bibles.

### The Closed Book: Seven Short Stories

May 7–June 12, 2005, and July 23–October 6, 2005

Before you open a book at the Walters, you can often find clues from its binding about its past as a prized item in a collection. From the medieval period, when entire manuscripts were handmade, to the 20th century, bindings were created or altered to reflect the interests, heritage, wealth, and tastes of the owners. This exhibition explored how certain markings on or materials of bindings often reveal fascinating details about the people who once owned and used these 24 books.

## ANCIENT FOCUS SHOWS

### Tools and Models: The Art of the Sculptor in Ancient Egypt

*August 9, 2003–October 31, 2004*

Ancient Egyptian artists and craftsmen used many different kinds of tools made of stone, metal, and wood. They made colors from natural pigments, the basic materials for which were available in the desert regions. Sketches, study pieces, and models played an important role in their training. This focus exhibition of 25 objects looked at the artists' tools, techniques, and training methods.

### Carved for Immortality

*November 6, 2004–October 2, 2005*

In ancient Egypt, carved wooden figures of the deceased were placed in special chambers or niches in tombs. Some tombs contained many different statues and statuettes, depicting not only the owner of the tomb at different stages throughout his life, but also family members and servants. Originally, these carvings were brightly painted to be as lifelike as possible. Twenty-three statuettes were displayed in this focus exhibition.

## EXHIBITIONS OF 19TH-CENTURY WORKS ON PAPER

### The Recollections of a Baltimore Artist: Sketches by Alfred Jacob Miller (1810–74)

*August 9, 2003–October 31, 2004*

Alfred Jacob Miller is most widely known as the artist who recorded the early American

fur-trade when he accompanied the Scottish adventurer William Drummond Stewart to the annual fur-traders' rendezvous held in 1837 in the Green River Valley in Wyoming. The countless sketches that he drew for his own enjoyment were only known to his relatives and friends. This exhibition displayed 36 humorous sketches that included scenes recalling Miller's youth at his father's house on Old Market Square in Baltimore's inner harbor, trips to the resorts of Harpers Ferry and Cape May, and his travels in France, England, and Italy in the early 1830s. As he was widely read in both popular and serious literature of the present and past, Miller frequently took inspiration from literary and theatrical sources for his drawings. A portrait of the artist was included.

### Popular Prints from the French Revolution (Part 1)

*October 3, 2004–January 17, 2005*

### Popular Prints from the French Revolution (Part 2)

*February 12–June 19, 2005*

This two-part exhibition examined popular prints from the French Revolutionary period (approximately 1789–93), highlighting how such prints were used, sold, and displayed and exploring the sources for their imagery in popular culture. Forty-four never-before exhibited prints from the Walters' collection were grouped into thematic sections (21 in part one, and 23 in part two). The installation outlined the chronological course of the Revolution and also demonstrated how prints were used both to communicate news and events and to disseminate political opinions.

### The Walters' American Collection

*June 29, 2005–January 1, 2006*

While strong in many types of art, the Walters has only a relatively small number of American works. William Walters first collected American art, but, while living abroad, he became interested in European art and sold off most of his American holdings. Henry Walters acquired some American works, but he never consistently tried to expand his collecting in this field. Since its opening as a public museum in 1934, the Walters has been given paintings by American artists, many of which were once displayed in the parlors of William Walters' Baltimore contemporaries. Fourteen paintings by Americans were on view in this focus exhibition.

## JAPANESE PRINT EXHIBITIONS

A generous grant from the E. Rhodes and Leona B. Carpenter Foundation provided essential support for the exhibition of Japanese prints—for conservation, storage, identification, and study. Chinese and Japanese paintings were rotated throughout the year on the same schedule as the print exhibitions.

### Fantastic Tales: The World of the Supernatural

*April 14–July 11, 2004*

The 10 prints in this exhibition were part of the response to the enormous upsurge in popularity of supernatural themes in Japan during the 19th century.

## On the Eve of Battle

July 14–October 17, 2004

This exhibition of 9 prints from the 19th century illustrated some of the less dynamic moments before battle, when the Japanese warrior prepared himself physically and mentally for the ensuing fight, the unexpected, and the possibility of death.

## Romance, Murder, and Revenge: Kabuki Prints by Konishi Hirotsada (ca. 1810–64)

October 20, 2004–January 2, 2005

The 9 prints in this exhibition were records of the 1850 and 1851 theater seasons in the city of Osaka, Japan, as seen through the eyes of Osaka's greatest printmaker.

## Make Them Laugh: Slapstick and Satire in Japan

January 5–April 17, 2005

This exhibition displayed 14 prints that inspire both smiles and belly laughs and contain touches of the fascinating and the weird.

## Defeated Warriors: The Fall of the Heike Clan

April 20–July 31, 2005

The episodes depicted in these nine prints have as their source *The Tale of the Heike*, an epic account of the 12th-century Japanese civil wars, composed during the 13th century and kept alive orally for 600 years by Buddhist monks.

## PORTRAIT MINIATURE EXHIBITIONS

### The Last Bourbon Monarchs of France

July 24, 2004–May 22, 2005

From the reign of Henri IV (1594–1610) until 1793, the Bourbon dynasty ruled France. After the French Revolution and the collapse of Napoleon's empire, the royal family was restored, but without absolute powers. These seven miniatures included portraits of Louis XVI, Marie Antoinette, Louis XVIII, and Charles X.

### English Portrait Miniatures

May 28–December 4, 2005

Miniature painting flourished in England during the second half of the 18th century. This selection of 13 portrait miniatures included those by such noted masters in the field as Jeremiah Meyer, C. F. Zincke, John Smart, and George Englehart.

## OFF-SITE EXHIBITIONS

### Realms of Faith: Medieval and Byzantine Art from the Walters Art Museum, Baltimore

The Frist Center for the Visual Arts, Nashville, Tennessee

April 13, 2002–August 15, 2004

This loan exhibition comprised 55 Walters' works of art from the Middle Ages, A.D. 300–1400, representing the Migration, Romanesque, and Gothic periods in the West, and Late Antique, Byzantium, Russian, and Ethiopian in the East.

### The Book of Kings: Art, War, and the Morgan Library's Medieval Picture Bible

Elizabeth Myers Mitchell Art Gallery at St. John's College, Annapolis, Maryland

November 8–December 20, 2004;

Williams College Museum of Art, Williamstown, Massachusetts

January 30–April 25, 2005

*The Crusader Bible* is one of the greatest manuscripts produced in France during the 13th century and now owned by the Morgan Library, New York. Facsimiles of 25 folios recount biblical history in sumptuous color and vivid detail, accurately portraying life, love, and death during the Middle Ages. Eleven objects and eight manuscripts from the Walters' collection elaborated on the themes of the picture bible, from techniques of storytelling and propaganda to the portrayal of 13th-century life. An education gallery accompanied the exhibition. This exhibition was supported by a grant from the National Endowment for the Humanities.

# ACQUISITIONS

## **Gift of Stephen W. Fisher, 2004**

Takeuchi Chubei (Japanese), *Vase Decorated with Vines and Tendrils*, ca. 1880, cloisonné enamel (49.2821)

## **Gift of John and Berthe Ford, 2004**

India (Uttar Pradesh), *Dancing Ganesha*, 9th–10th century, beige sandstone (25.253)

India (Karnataka or Bagli?), *Shiva*, 10th century, grayish-green granite (25.254)

India (Madhya Pradesh), *Ascetic Shaiva Deity*, 10th–11th century, pink sandstone (25.255)

India (Kerala), *Krishna with Butterballs*, 13th century, bronze (54.3019)

India (Andhra Pradesh or Tamil Nadu?), *Vishnu*, 13th century, bronze (54.3020)

## **Gift of Dr. William L. Guyton, 2004**

Attributed to Francisco José de Goya y Lucientes (Spanish), *Portrait Miniature*, 18th century, oil on copper mounted on board (38.666)

## **Gift of Carol and Furman Hebb, 2004**

Byzantine, *Gold Cross with Glass Inset*, 7th century, gold with glass inset (57.2296)

## **Gift of Lloyd and Jeanne Raport, 2004**

Roman, *Stele with Menorah Decoration*, 1st–6th century, basalt (23.280)

Germany or Austria, *Torah Scroll*, ca. 1600, ink on vellum (W.914)

## **Gift of Mrs. Charlotte Truesdell, 2005**

Venice, *Glass Bowl in a Vetro a Retorti Pattern*, ca. 1580–1620, glass (47.738)

## **Source unknown**

*Portrait of Harry Gladding*, oil on canvas (2004.61)

## GIFTS TO THE CHAMBER OF WONDERS

### **Gift of Michael Abromaitis, 2004**

*Bear Skull*, bone (2004.42)

*Tibia Fusus Linne Shell* (2004.53.1)

*Murex Pecten Shell* (2004.53.2)

### **Gift of Sabine Albersmeier, 2004**

*Illustration of Callimachus Inventing the Corinthian Column*, 1690, engraving from a printed book (2004.56)

### **Gift of Luise and Oskar Biehler, 2004**

*Three Pairs of Mounted European Deer Antlers* (2004.39.1–3)

### **Gift of Jane Calegari, 2005**

*Baltic Amber*, amber resin (2005.12)

### **Gift of The Colmers Family, 2004**

*Goliathus goliatus Beetle* (2004.44)

### **Gift of Matthew and Moriah Dandridge, 2005**

*Petrified Wood Slice*, cut and polished (2005.15)

### **Gift of Rosalyn and Lauren Hamlett, 2004**

*Wilbeest (Gnu) Skull and Horns*, bone (2004.69.1)

Sebastian Munster (German), *Map of Jerba Isle, Tunisia, from 1574 German Edition of "Cosmographia,"* woodcut print with watercolors (2004.69.2)

### **Gift of Mrs. Joaneath Spicer Hopkins, 2005**

*Australian Trumpet Shell (Syrinx aruanus)* (2005.10)

### **Gift of James Lide and Deborah Horowitz, 2004**

*Morpho menelaus Butterfly (Blue Morpho)* (2004.35)

### **Gift of Trent and Jessica Gates, in memory of Patricia Ritterhoff, 2005**

North America (Florida), *Pair of Agraulis vanillae Butterflies (Gulf Fritillary)* (2005.1)

### **Gift of Avan Van Leuven Geenen and William Elliot Geenen, 2004**

*White-tail Deer Skull with Five-point Antlers*, bone (2004.30.1)

*Helmet Shell* (2004.30.2)

*Shedded Snakeskin* (2004.30.3)

### **Gift of Nathan and Natalie Grimmer, 2005**

Africa, *Cymothoe sangaris butterfly* (2005.11)

### **Gift of Denva Jackson, 2004**

Africa, *Cymothoe sangaris Butterfly* (2004.34)

### **Gift of Simon Kelly, 2004**

Indonesia, *Lschlopsopha bifasciata (Flower Beetle)* (2004.47)

### **Gift of Dr. Atlee C. Kepler, 2005**

*Crocodile Skull* (2005.32)

### **Gift of the Klose Family, 2004**

Sarina Brewer (American), *Sea Devil*, taxidermized sting-ray and thread (2004.58)

### **Gift of Marcy Feeney and Mark Klotzback, 2004**

Africa, *Moon Moth (Argema mimosae)* (2004.67.1)  
*Illustration of Ancient Shoes from Unidentified Book*, 1690, engraved print on paper, (2004.67.2)

### **Gift of Margaret Mary Kocis, 2005**

*Pair of Euphaea variegata Dragonflies* (2005.30)

### **Gift of Elizabeth Kruppa, 2004**

Costa Rica, *Twenty Butterfly Specimens* (2004.62)

### **Gift of Chris and Karen Kunkel, 2004**

*Mounted Pheasant*, taxidermized and mounted (2004.40)

### **Gift of Marianne Laino, 2004**

Indonesia, *Indonesian Order Hemiptera (Stink Bug)* (2004.45)

**Gift of Kate Lau, 2005**

Purple Spotted Swallowtail Butterfly (*Graphium weiskei*) (2005.14)

**Gift of Richard Leson, 2004**

North America (Florida), *Luna Moth* (2004.43)

**Gift of Charlie Mann, 2004**

*Dorcus titanus titanus* Beetle (2004.38)

**Gift of Neil, Kyle, Sarah, and Mitchell Britton, Shari McCormick and Tom Mead, 2005**

Pacific Thorny Oyster Shell (*Spondylous princes*) (2005.19)

**Gift of Paula, Dale, and Lydia Millet, 2004**

Alligator Skull (2004.57)

**Gift of Zachary Mittelman, 2005**

North America, *Pair of Tiger Moths* (*Gramelia navadensis arctiidae*) (2005.13)

**Gift of Alexandra and Martin Niemczewski, 2005**

Africa, *Goliathus cacticus goliatus* Beetle (2005.2)

**Gift of Marietta Nolley, 2004**

Africa, *Stag Beetle* (2004.68.1)

*Cyclommattus metallifer* Beetle (2004.68.2)

**Gift of Elissa O'Loughlin, 2004**

*Endive Murex* Shell (2004.59.1)

*Letter Cone* Shell (2004.59.2)

**Gift of Kathleen O'Meara Farley, 2004**

Afghanistan, *Lapis Lazuli* (2004.72)

**Gift of Rebecca Perlmutter, 2004**

El Salvador (Santa Ana), *Volcanic Rocks* (2004.60)

**Gift of Howard, Nancy, and Lisa Pinn in memory of Elizabeth Conn, 2005**

Malaysia, *Bold Spiked Birdwing Butterfly* (*Trogonoptera brookiana*) (2005.20.1)

New Guinea (Papua), *Green Swallowtail Butterfly* (*Papilio blumei*) (2005.20.2)

Indonesia, *Blue Ulysses Swallowtail Butterfly* (*Ulysses ulysses*) (2005.20.3)

Madagascar, *Giraffe-neck Weevils* (*Trachelophorus giraffe*) (2005.20.4)

Madagascar, *Sand Dollar Fossil* (*Clypeus Species, Jurassic Period*) (2005.20.5)

**Gift of Elias Christopher Ramos, 2004**

Indonesia (Java), *Javanese Stick Insect* (2004.33)

**Gift of Jacqueline Marie Musacchio and Anthony J. Ratyna, 2005**

Indonesia, *Draco haematopogon* (*Flying Lizard*) (2005.4)

**Gift of Robert and Eleanor Rodini, 2004**

Africa, *Papilio phorcas congoanus* (*Green Banded Swallowtail Butterfly*) (2004.73)

**Gift of Sandra Murphy Schmidt, 2005**

*Reproduction of 1541 Mercator Terrestrial Globe* (2005.18)

**Gift of Emily, Rebecca and Krista Schumm, 2004**

*Four-horned Ram Skull*, bone (2004.37.1)

*Emerald in the Rough*, emerald (2004.37.2)

*Rhinoceros Beetle* (2004.37.3)

**Gift of Alec and Douglas Scott, 2004**

Thailand, *Chloridolum itoi* (*Long-horned Beetle*) (2004.51)

**Gift of Marianne and Frank Seger, 2004**

Czechoslovakia, *Natural Silver Nugget*, silver (2004.54.1)

North America (Michigan, Caledonia Mine), *Three Natural Copper Nuggets*, copper (2004.54.2)

**Gift in memory of I. D. Shapiro by his children Jane S. Baum and James R. Shapiro, 2004**

Quebec, *Moose Head*, 1947, taxidermized and mounted (2004.66.1)

Tanzania, *Warthog*, 1968, taxidermized and mounted (2004.66.2)

North America (Alaska), *Barren Ground Caribou Antlers*, 1962, bone, taxidermized and mounted (2004.66.3)

Africa, *Leopard Skin*, 1958 (2004.66.4)

Spain, *Red Stag Skull and Antlers*, 1979, bone, taxidermized and mounted (2004.66.5)

North America (Point Barrow, Alaska), *Polar Bear Skull*, 1961, bone (2004.66.6)

North America (Kotzebue, Alaska), *Grizzly Bear Skull*, bone (2004.66.7)

British Honduras, *Jaguar Skull*, 1970, bone (2004.66.8)

North America (Arizona), *Cougar Skull*, 1969, bone (2004.66.9)

**Gift of Dr. Abdel Ghaffar Shedid, 2005**

Egypt, *Dung Beetle* (2005.34)

**Gift of Hanna-Sophia Shine, 2005**

*Coconut Crab* (2005.3)

**Gift of Barbara Sheehan Simmons, 2005**

*Illustration of Aldrovandi's Dragon and Basilisk from a Natural History Book by Jan Jonston* (Polish, 1603-1675), copperplate engraving on paper (2005.17)

**Gift of Kate Siplon, 2004**

*Mormolyce phylloides* Beetle (*Violin or Fiddle Beetle*) (2004.55)

**Gift of Jacqueline Slavney, 2004**

*Human Skull*, bone (2004.52)

**Gift of Sam and Max Sobkov, 2005**

*Crown of Thorns Starfish* (2005.22.1)

*Box Crab* (2005.22.2)

**Gift of Ted and Joan Sobkov, 2005**

*Illustration of the Hebrew Alphabet from a Printed Book*, 1690, copperplate engraving on paper (2005.23)

**Gift of Joaneath Spicer, in memory of Mary Ellen Reno, 2004**

Asia, *Cryestis thyodamas* (*Common Map Butterfly*) (2004.48)

**Gift of Joaneath Spicer, in honor of Ann Wilson, 2004**

Burma, *Ruby in the Rough*, ruby (2004.49)

**Gift of Nicholas and Sally Stchur, 2004**

*Cicada* (2004.25)

**Gift of Morten Steen Hansen, 2004**

Monocco, *Azurite* (2004.50)

**Gift of Susan Tobin, 2005**

Asia, Scarab Beetle (*Cetoniidae Rhomborrhina resplendens*) (2005.31.1)

**Gift of Susan Tobin in memory of Rachel K. Tobin, 2005**

Alain Manesson Mallet, *Illustration of Mummies of Egypt*, from "Description de l'Universe," 1684–1685 German Edition, 1684–1685, printed copper engraving (2005.31.2)

*Illustration of Syrian, Phoenician, and Egyptian Alphabets*, from a Printed Book, 1690, printed copper engraving (2005.31.3)

**Gift of Spencer Throckmorton in honor of Julianne Alderman, 2005**

Mexico, *Spondylous Shell Necklace*, ancient spondylous shell beads and with modern string (2004.70)

**Gift of Grant and Garrett Voigt, 2004**

Amber with Fossilized Lizard Remains, fossil resin (2004.36.1)

Amber with Fossilized Crustacean Remains, fossil resin (2004.36.2)

**Gift of Françoise G. von Mayer, 2005**

South Pacific, *Elbow Crab* (*Rhinolambrus pelagicus*) (2005.16.1)

Alain Manesson Mallet, *Map of India and Malay Peninsula*, from 1683 edition of "Description de l'Univers," 1683, copperplate engraving on paper (2005.16.2)

Abraham Jansz van Diepenbeck, *Man from Bisnagar, India*, from 1667 edition of "Kerkelijke Histoire van de gehele wereld (Religious History of the Whole World)" by Cornelius Hazart, 1667, copperplate engraving on paper (2005.16.3)

**Gift of Susan Wallace, 2005**

Africa, *Charaxes ameliae* Butterfly (2005.35)

**Gift of Patricia Durkin and Richard Smith, members of the Washington Area Butterfly Club, 2004**

North America, Male Eastern Tiger Swallowtail (*Papilio glaucus*) (2004.63.1)

North America, Female Pipevine Swallowtail (*Battus philenor*) (2004.63.2)

North America, Female Zebra Swallowtail (*Eurytides marcellus*) (2004.63.3)

North America, Male Meadow Fritillary (*Boloria bellona*) (2004.63.4)

North America, Female Meadow Fritillary (*Boloria bellona*) (2004.63.5)

North America, Female Black Swallowtail (*Papilio polyxenes*) (2004.63.6)

North America, Male Common Buckeye (*Junonia coenia*) (2004.63.7)

North America, Male Red-spotted Purple (*Limenitis astyanax*) (2004.63.8)

North America, Male Baltimore Checkerspot (*Euphydryas phaeton*) (2004.63.9)

North America, Female Baltimore Checkerspot (*Euphydryas phaeton*) (2004.63.10)

North America, Male Clouded Sulphur (*Colias philodice*) (2004.63.11)

North America, Female Sleepy Orange (*Eurema nicippe*) (2004.63.12)

North America, Female Cloudless Sulphur (*Phoebis sennae*) (2004.63.13)

North America, Male Great Spangled Fritillary (*Speyeria cybele*) (2004.63.14)

North America, Male Northern Pearly-Eye (*Enodia anthedon*) (2004.63.15)

North America, Male Variegated Fritillary (*Euptoieta claudia*) (2004.63.16)

**Gift of The Wilde Family, 2005**

Stuffed Iguana, taxidermized (2005.33)

**Gift of Marieke J. Wilson, 2005**

Madagascan Sunset Moth (*Chrysidia riphearia*) (2005.21)

**Gift of Nancy and Stephan Zinn, 2004**

Thailand, *Batocera roylei* (Longhorn Beetle) (2004.41)

## PURCHASES

**Museum purchase, with funds provided by the Women's Committee of the Walters Art Museum, 2004**

Marcello Del Colle (Italian), *Reproduction Marble Fountain for Courtyard*, 2004, Carrara rosso francia marble (2004.46)

**Museum purchase with funds provided by the Dr. Francis D. Murnaghan Fund and the Von Hess Foundation, 2005**

Netherlands (Liège), *Wineglass (Façon de Venise)*, ca. 1650–1690, cristallijn or soda lime glass (47.739)

**Museum purchase with funds provided by the Eddie and Sylvia Brown Challenge Grant for the Acquisition of African American Art and the Estate of Anna Feel, 2004**

Henry Osaka Tanner (African), *Portrait Bust of Bishop Benjamin Tucker Tanner (1835–1923)*, 1894, patinated plaster (28.33)

## LOANS FROM THE MUSEUM'S COLLECTION

**The Greek Athlete and the Games**

Museum of Fine Arts, Boston, Massachusetts

**Gilbert Stuart**

Metropolitan Museum of Art, New York, New York; National Gallery of Art, Washington, D.C.

**Creating a Renaissance Identity: Fra Carnevale, Filippo Lippi and the Court of Urbino**

Metropolitan Museum of Art, New York, New York

***The Castellani and Italian Archaeological Jewelry***

Bard Graduate Center, New York, New York

***An American Impressionist: Theodore Robinson in Giverny***

Baltimore Museum of Art, Baltimore, Maryland; Phoenix Art Museum, Phoenix, Arizona; Wadsworth Atheneum, Hartford, Connecticut

***Eternal Presence: Handprints and Footprints in Buddhist Art***

Bard Graduate Center, New York, New York

***Pontormo, Bronzino and the Medici: The Transformation of the Renaissance Portrait***

Philadelphia Museum of Art, Philadelphia, Pennsylvania

***Alexander the Great, King of the Macedonians***

Alexander S. Onassis Public Benefit Foundation, New York, New York

***The Kingdom of Siam: Arts of Central Thailand, 1350 - 1800***

Asian Art Museum, San Francisco, California; Peabody Essex Museum, Salem, Massachusetts

***Reading and Writing the Pedagogy of the Renaissance***

The Peabody Institute, Baltimore, Maryland

***The Essence of Line: French Drawings from Ingres to Degas***

Baltimore Museum of Art, Baltimore, Maryland; Birmingham Museum of Art, Birmingham, Alabama; Tacoma Art Museum, Tacoma, Washington

LOANS TO THE WALTERS  
ART MUSEUM

***The Road to Impressionism: Landscapes from Corot to Monet***

Baltimore Museum of Art, Baltimore, Maryland

***Gathering Jewels: Japanese Illustrated Books from the Lionel Katzoff Collection***

Lionel Katzoff, Baltimore, Maryland

***The Early History of the Bible***

Chizuk Amuno Congregation, Baltimore, Maryland

***Byzantine Art from Dumbarton Oaks***

Dumbarton Oaks, Washington, D.C.

***Stubbs and the Horse***

Johnny Bute, Cumbrae, London, United Kingdom

The Earl of Halifax, York, United Kingdom  
Fitzwilliam Museum, Cambridge, United Kingdom

Grimsthorpe and Drummond, Bourne, United Kingdom

The Earl and Countess of Macclesfield, Watlington, Oxfordshire, United Kingdom

The Earl of March, West Sussex, United Kingdom

National Gallery, London, United Kingdom

National Galleries of Scotland, Edinburgh, Scotland

National Museum and Galleries on Merseyside, Liverpool, United Kingdom

National Portrait Gallery, London, United Kingdom

Private Collections, London, United Kingdom

Private Collection, Northampton, United Kingdom

The Duke of Portland, North Nottinghamshire, United Kingdom

Royal Academy of Arts, London, United

Kingdom

Royal Collection, London, United Kingdom

Lady Juliet Tadgell, Kent, United Kingdom

Tate Britain, London, United Kingdom

Duke of Westminster, Chester, United Kingdom

Kimbell Art Museum, Fort Worth, Texas

The Marion Koogler McNay Art Museum, San Antonio, Texas

National Gallery of Art, Washington, D.C.

Philadelphia Museum of Art, Philadelphia, Pennsylvania

Private Collection, New York

The Pierpont Morgan Library, New York, New York

Yale Center for British Art, New Haven, Connecticut

Yale University Art Gallery, New Haven, Connecticut

***Pearls of the Parrot***

Metropolitan Museum of Art

***The Essence of Line: French Drawings from Ingres to Degas***

Baltimore Museum of Art

# DONORS

## GENERAL OPERATING SUPPORT

Baltimore City, Baltimore Office of  
Promotion and the Arts  
State of Maryland, Maryland State Arts  
Council  
Baltimore County, Baltimore County  
Commission on Arts and Sciences  
Anne Arundel County  
Carroll County, Carroll County Arts  
Council  
Harford County  
Howard County, Howard County Arts  
Council

## INDIVIDUALS

### Benefactor

Mr. and Mrs. Robert S. Feinberg  
Mr. and Mrs. Robert E. Hall  
Mr. and Mrs. Mayo A. Shattuck III

### Founders Circle

Alex. Brown & Sons Charitable  
Foundation, Inc.  
Mr. and Mrs. Peter L. Bain  
Ms. Hope Birsh and  
Mr. Stephen Plakotoris  
Mr. and Mrs. Neal D. Borden  
Dr. and Mrs. William R. Brody  
Mrs. Joseph Bryan III  
Dr. and Mrs. Worth B. Daniels, Jr.  
Mr. and Mrs. Richard S. Davison  
James H. DeGraffenreidt, Jr. and  
Mychelle Y. Farmer

The Harry L. Gladding Foundation  
Mr. James A. Goodyear and  
Dr. Patricia W. Goodyear  
Mr. and Mrs. Jack S. Griswold  
Mrs. Howard Head  
Ms. Jennifer Hopkins  
Mrs. Mary Hyman  
Mr. and Mrs. John H. Laporte  
Miss Dorothy McIlvain Scott  
Mrs. Cynthia R. Mead  
Mr. Robert E. Meyerhoff  
Mr. and Mrs. Arthur B. Modell  
Mr. and Mrs. Edmund R. Novak, Jr.  
Mr. and Mrs. David R. Owen  
Mr. and Mrs. William L. Paternotte  
Mr. and Mrs. George J. Pedersen  
Mr. William H. Perkins and  
Ms. Amy K. Huntoon  
Mr. and Mrs. George A. Roche  
Mr. and Mrs. Thomas Schweizer, Jr.  
Mr. and Mrs. George M. Sherman  
Mr. Jerome D. Smalley  
Mr. and Mrs. Hervey S. Stockman  
Mr. and Mrs. M. David Testa  
Mr. and Mrs. Jay M. Wilson  
Anonymous (1)

### Henry and William Walters Circle

Mr. and Mrs. Lee E. Alderdice  
Mr. and Mrs. Calvin H. Baker  
Mr. and Mrs. Edward C. Bernard  
Mr. and Mrs. Frank A. Bonsal, Jr.  
Mr. and Mrs. Eddie C. Brown  
The Bunting Family Foundation  
Mr. Stiles T. Colwill  
Mr. and Mrs. H. Chace Davis, Jr.  
Mrs. Laura Delano Eastman



Mr. and Mrs. Philip D. English  
Mr. and Mrs. Michael B. Glick  
Mr. and Mrs. H. Thorne Gould  
Betty Huse MD Charitable Foundation  
Mr. Nizam Peter Kettaneh  
Mrs. Louis B. Kohn II  
Mr. and Mrs. Earl L. Linehan  
Mr. and Mrs. Nicholas Mangione  
Mr. and Mrs. George V. McGowan  
Mr. and Mrs. Samuel Perkins  
Ms. Sara D. Perkins  
Dr. and Mrs. Anthony Pinto III  
Mr. and Mrs. Brian C. Rogers  
Mr. and Mrs. John W. Sasser  
Mr. and Mrs. Dennis J. Shaughnessy  
Dorothy Wagner Wallis Trust  
Mr. and Mrs. Peter Van Dyke  
Mr. and Mrs. Bruce P. Wilson  
Anonymous (2)

### Director's Circle

Mr. and Mrs. Michael J. Abromaitis  
George C. and Julianne E. Alderman

Dr. and Mrs. Aristides C. Alevizatos  
Mr. and Mrs. Frank Andrew  
Mr. and Mrs. Joseph J. Askin  
Mr. and Mrs. Douglas L. Becker  
Mr. and Mrs. Stephen W. Boesel  
Dr. and Mrs. Donald D. Brown  
Mr. and Mrs. Roger L. Calvert  
Ms. Constance R. Caplan  
Mr. and Mrs. Beverley C. Compton, Jr.  
Mr. and Mrs. John C. Cooper III  
Mr. and Mrs. Anthony W. Deering  
Mr. Edward L. Dopkin  
Dr. James R. Duke  
Mr. and Mrs. William F. Farley  
Mr. and Mrs. John G. Ford  
Mr. and Mrs. Barrett W. Freedlander  
Ms. Norma Jean Geesey  
The Hecht-Levi Foundation  
Mr. and Mrs. Samuel K. Himmelrich, Sr.  
Miss Amanda W. Hopkins  
Ms. Antoinette Hopkins

Mr. and Mrs. A. C. Hubbard, Jr.  
The Honorable Benson E. Legg and  
Mrs. Legg  
Mrs. Isaac C. Lycett, Jr.  
Mrs. Ruth R. Marder  
Mr. David D. McNally and  
Ms. Michelle Nilssen  
Mr. and Mrs. Michael A. Meredith  
Mrs. Sally J. Michel  
Mrs. Robert P. Mittelman  
Mr. and Mrs. J. Jefferson Miller II  
Mr. and Mrs. Decatur H. Miller  
Ms. Ann K. Morales  
Charles J. and Mary Kathryn Nabit  
The Peterson Family Foundation  
Mr. and Mrs. Edward L. Rosenberg  
Mr. and Mrs. Stephen T. Scott  
Mr. and Mrs. Thomas H. Segal  
Mr. and Mrs. M. Sigmund Shapiro  
Mr. and Mrs. Edward P. Siegel  
Aaron & Lillie Straus Foundation, Inc.

Mr. and Mrs. Marinos Svolos  
Mr. and Mrs. Robert M. Taubman  
Mrs. Clifford A. Truesdell III  
Dr. and Mrs. Gary K. Vikan  
Dr. and Mrs. Daniel H. Weiss  
Mr. and Mrs. Christopher R. West  
Mr. and Mrs. Edward Foss Wilson  
Mrs. Gladys Winter  
Mr. Charles A. Wunder  
Ms. Jean Wyman

### Curators' Circle

Adalman-Goodwin Foundation, Inc.  
Mr. and Mrs. Bruce M. Ambler  
Mr. and Mrs. Mahlon Apgar IV  
Mrs. Alexander Armstrong  
Lois & Irving Blum Foundation  
Dr. and Mrs. John K. Boitnott  
Mr. and Mrs. Perry J. Bolton  
Mr. and Mrs. Kenneth Allen Bourne, Jr.  
Mr. and Mrs. Edward J. Brody  
Mr. and Mrs. Robert P. Burchard  
The Campbell Foundation, Inc.  
Mr. and Mrs. Henry Ward Classen  
Mr. and Mrs. David S. Cordish  
Mr. and Mrs. William H. Cowie, Jr.  
Mrs. Anne H. Cullen  
Mr. and Mrs. Mark Deering  
Mr. and Mrs. A. Eric Dott  
Mr. and Mrs. Frederic Emry  
Mr. and Mrs. Randal B. Etheridge  
Ms. Lauren Adams Fortmiller  
Mrs. Charlton Friedberg  
Mr. and Mrs. James R. Garrett  
Sandra Levi Gerstung  
Mrs. W. H. Holden Gibbs  
Mr. and Mrs. David R. Giroux  
Mr. Jay H. Gouline  
Dr. Roland R. Griffiths  
Mr. and Mrs. Benjamin H. Griswold IV  
Mr. and Mrs. Timothy W. Hathaway  
Mr. and Mrs. Donald B. Hebb, Jr.  
Mr. and Mrs. Carl E. Hecht  
Mr. and Mrs. Robert E. Hellauer, Jr.





Drs. Terry H. and Dana C. Hilt  
 Mr. and Mrs. Thomas R. Hobbs  
 Harley W. Howell Charitable Foundation  
 Mr. and Mrs. Richard E. Hug  
 Captain and Mrs. Daniel Hunt  
 Mr. and Mrs. Benno Hurwitz  
 Mrs. Diana F. Jacquot  
 Dr. and Mrs. Marc Kahn  
 Mr. and Mrs. Leon Kaplan  
 Mrs. Harry E. Karr  
 Mr. and Mrs. James Kennedy  
 The Kinsley Family Foundation  
 Mr. and Mrs. Esko Korhonen  
 Mr. and Mrs. Ernest Kovacs  
 The Abraham & Ruth Krieger  
 Foundation, Inc.  
 John J. Leidy Foundation, Inc.  
 Mrs. Donald S. Levinson  
 The Macht Philanthropic Fund  
 Mr. and Mrs. Bernard Manekin  
 The Dr. Frank C. Marino Foundation  
 Mr. and Mrs. Alexander T. Mason  
 Mr. and Mrs. Wallace Mathai-Davis

Mr. and Mrs. Robert J. Mathias  
 Mr. Stanley Mazaroff and  
 Ms. Nancy Dorman  
 Mr. and Mrs. Kevin A. McCreddie  
 Mr. and Mrs. James Dabney Miller  
 Lloyd E. Mitchell Foundation  
 Mr. and Mrs. J. William Murray  
 Mr. and Mrs. Harry P. Pappas  
 Mr. and Mrs. I. Manning Parsons  
 Mrs. Walter D. Pinkard, Sr.  
 Mr. and Mrs. William M. Passano, Jr.  
 Mr. and Mrs. Matthew S. Polk, Jr.  
 Major General Eugene C. Renzi  
 Mrs. Kathryn C. Rienhoff  
 Mr. and Mrs. Richard C. Riggs, Jr.  
 Mr. and Mrs. Stanford Rothschild, Jr.  
 Mr. and Mrs. J. Mark Schapiro  
 Mr. and Mrs. Herbert Scher  
 Dr. and Mrs. Thomas E. Schwark  
 Mr. and Mrs. Donald J. Shepard  
 Mrs. Arthur W. Sherwood  
 Mr. and Mrs. Raymond C. Shreckengost  
 Dr. Herbert A. Silverman and  
 Ms. Penelope L. Pine  
 Mr. and Mrs. James M. Smith  
 Dr. and Mrs. G. Thomas Strickland  
 Dr. and Mrs. Patrick C. Walsh  
 Mr. and Mrs. Josiah J. Willard III  
 Dr. Laurie S. Zabin  
 Anonymous (1)

### Patron

Mr. and Mrs. Charles T. Albert  
 Mrs. Howard Baetjer II  
 Dr. and Mrs. John R. Bareham  
 Mr. and Mrs. Christopher H. Bartlett II  
 Mr. and Mrs. Bruce E. Behrens  
 Mr. and Mrs. Mark Bond  
 Dr. and Mrs. Rudiger Breitenacker  
 Ms. Paula McDonald Brown  
 Mr. and Mrs. J. Dorsey Brown III  
 Ms. Pamela Buell  
 Mrs. G. Lloyd Bunting

Mr. and Mrs. John G. Campbell  
 Mrs. Susan T. Cashman  
 Mr. and Mrs. Andrew J. A. Chriss  
 Mr. and Mrs. Stuart M. Christhilf III  
 Ms. Suzanne F. Cohen  
 Mr. and Mrs. George J. Collins  
 Mr. and Mrs. Mark McC. Collins, Jr.  
 Mr. and Mrs. Mark Davison  
 Mr. and Mrs. L. Patrick Deering  
 Miss Caroline H. Dixon  
 Mr. C. Franklin Eck, Jr.  
 Mr. and Mrs. Alan S. Edelman  
 Mr. and Mrs. Richard A. Eliasberg  
 Dr. and Mrs. Richard Falk  
 Mr. and Mrs. Edward Feltham, Jr.  
 Mrs. G. Bernard Fenwick, Jr.  
 Mr. and Mrs. William A. Fisher III  
 Mr. and Mrs. John C. Frederick  
 Matthew and Gladys Arak Freedman  
 Dr. and Mrs. John M. Freeman  
 Mr. and Mrs. Austin H. George  
 Mr. and Mrs. Douglas S. Goodwin  
 Mr. and Mrs. Charles Goodwin III  
 Mr. and Mrs. David M. Gray  
 Mr. and Mrs. Joseph R. Hardiman  
 Mr. and Mrs. Brian P. Harrington  
 Mrs. Isaac Hecht  
 Mr. and Mrs. John H. Heller  
 Mr. and Mrs. George B. Hess, Jr.  
 Mrs. Fred Hittman  
 Mr. and Mrs. John S. Holman  
 Mr. and Mrs. Leonard C. Homer  
 Mr. and Mrs. Thomas L. Hurst  
 Mr. and Mrs. Mark K. Joseph  
 Mr. and Mrs. Joseph Jay Katz  
 Mr. and Mrs. Herbert M. Katzenberg  
 Dr. and Mrs. Haig H. Kazazian, Jr.  
 Mr. George Lambillotte  
 Mr. Richard M. Lansburgh  
 Thomas P. Lemke and Sarah O'Neil  
 Mr. and Mrs. Keith W. Lewis  
 Mrs. Georgia L. Linthicum  
 Ethel M. Loomam Foundation

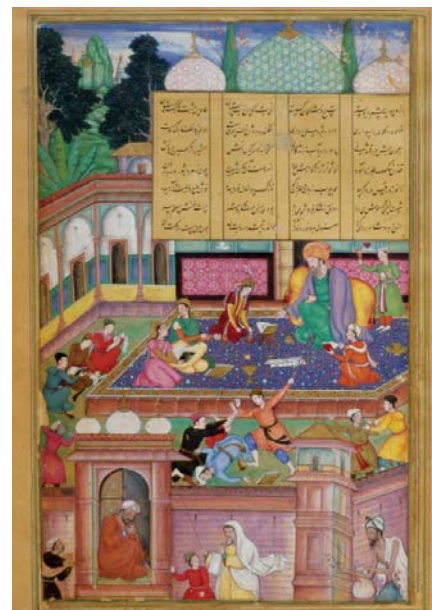
Mr. Charles M. Lott  
 Mrs. Seena Lubcher  
 Kate and Bunky Markert  
 Mr. and Mrs. Neil A. Meyerhoff  
 Mrs. Marilyn S. Meyerhoff  
 Ms. Stephanie F. Miller  
 Mr. and Mrs. Thomas E. D. Millspaugh  
 Ms. Jean-Barry Molz  
 Mr. George A. Murnaghan  
 Mr. and Mrs. John M. Nehra  
 Mr. and Mrs. Charles W. Newhall III  
 Ms. Anne O'Brien and Mr. David Fleck  
 Mr. and Mrs. Edward C. Oelsner III  
 Mr. and Mrs. Thomas F. O'Neil III  
 Mrs. Marjorie W. Ottenheimer  
 Dr. and Mrs. Lawrence C. Pakula  
 Mr. and Mrs. Richard W. Palmer  
 Ms. Antoinette Paterakis  
 Dr. John W. Payne and Mrs. Jane Champe Payne  
 Mrs. J. Stevenson Peck  
 Mr. and Mrs. James P. Piper III  
 Mr. Peter E. Quint  
 Mr. and Mrs. Philip Rauch  
 Mr. Vernon A. Reid  
 Mrs. Jean Riddell  
 Mr. and Mrs. Francis C. Rienhoff  
 Mr. and Mrs. James S. Riepe  
 Mrs. Richard C. Riggs  
 Mr. and Mrs. Aidan J. Riordan  
 Mr. and Mrs. John R. Rockwell  
 Mr. and Mrs. Leonard R. Sachs  
 Dr. and Mrs. Neal Salomon  
 Dr. and Mrs. Leonard Scherlis  
 Ms. Katherine P. Schwabe  
 Earle & Annette Shawe Foundation  
 Mr. and Mrs. Herbert J. Siegel  
 Ms. Jeanne H. Somerville  
 The James E. Steuart Foundation  
 Dr. and Mrs. John F. Strahan  
 The Stieff Foundation  
 The Louis B. Thalheimer & Juliet A. Eurich  
 Philanthropic Fund  
 Mr. and Mrs. Gregory Tice

Mr. and Mrs. Louis B. Van Dyck IV  
 Mr. and Mrs. Mark Vaselkiv  
 Mr. and Mrs. David J. Wallack  
 Mr. and Mrs. John M. Waltersdorf  
 Ms. Gwynne A. Weinberg  
 Mr. and Mrs. Robert A. Wert  
 Mr. and Mrs. Scott Alan Wieler  
 The Jack Wilen Foundation, Inc.  
 Mrs. Susan A. Wolman  
 Mr. and Mrs. M. Richard Wyman  
 The Zamoiski, Barber, Segal Family  
 Foundation, Inc.

### Sustainer

Mr. Kurt Aarsand  
 Mr. and Mrs. Donald C. Abbott  
 Mrs. Diane Abeloff and Dr. Martin Abeloff  
 Mr. and Mrs. Ronald G. Abrams  
 Ms. Susan L. Abrams  
 Mr. and Mrs. William Ross Adams  
 Dr. and Mrs. Brian P. Ahlstrom  
 Mr. Ray Albers and Ms. Meg Rhian  
 Drs. C. Alex and Sudha T. Alexander  
 Dr. and Mrs. Thomas E. Allen  
 Dr. Ann Hersey Allison  
 Mrs. Anne W. Almond  
 Mr. and Mrs. Frank E. Altoz  
 Mr. and Mrs. James W. Ancel, Sr.  
 Ms. Mildred B. Anderson  
 Ms. Dorothy M. Anderson  
 Dr. and Mrs. Paul M. Apostolo  
 Mrs. Floraine Applefeld  
 Mr. and Mrs. Thomas H. G. Baillièrre, Jr.  
 Ms. Alexandra Baillièrre  
 Mr. and Mrs. Jon Baker  
 Mr. and Mrs. Daniel R. Baker  
 Mr. H. Furlong Baldwin  
 William and Dale E. Balfour  
 Ms. Maria Luisa Barata  
 Mr. Anthony F. Barbieri, Jr.  
 Mr. and Mrs. Thomas M. Barry  
 Mr. and Mrs. George R. Barry  
 Ms. Jill M. Barry

Mr. and Mrs. David W. Barton, Jr.  
 Mrs. C. Marshall Barton, Jr.  
 Dr. and Mrs. Adam L. Basner  
 Mr. and Mrs. David I. Bavar  
 Dr. and Mrs. Theodore M. Bayless  
 Ms. Elizabeth Claggett Beck  
 Rheda Becker  
 Mr. and Mrs. David Booth Beers  
 Mr. and Mrs. David E. Belcher  
 Mr. and Mrs. Herbert J. Belgrad  
 Mr. and Mrs. Richard M. Bell  
 Dr. and Mrs. Emile A. Bendit  
 Mrs. Nancy Shields Benninghoff  
 Dr. Murry D. Bentley and Ms. Linda J. Clark  
 Dr. and Mrs. Benjamin Berdann  
 Mrs. Arlene S. Berkis  
 Dr. and Mrs. Barry R. Berman  
 Mr. and Mrs. John R. Bertani  
 Dr. and Mrs. C. Timothy Bessent  
 Dr. Christopher T. Bever, Jr. and  
 Dr. Patricia A. Thomas



Mr. and Mrs. Stephen F. Bisbee  
 Ms. Barbara B. Black  
 Ms. Mollye Block  
 Ms. Hilary Bok  
 Mr. and Mrs. John J. Boland  
 Mr. and Mrs. Walter M. Bollen  
 Mr. and Mrs. John M. Bond, Jr.  
 Mrs. Esther C. Bonnet  
 Mr. Stephen F. Bono  
 Susan and Daniel H. Borinsky  
 Mrs. John W. Born  
 Mr. and Mrs. Peter Bosworth  
 Mrs. Virginia C. Bowe  
 Mr. and Mrs. Liam E. Boyle  
 Mr. and Mrs. Thomas S. Bozzuto  
 Mr. and Mrs. James T. Brady  
 Mrs. Marilyn S. Braiterman  
 Mrs. Garnette Brant  
 Cleo P. Braver and Alfred Tyler II  
 Mr. and Mrs. William M. Brewster  
 Mrs. Carolyn O. Bronushas  
 Ms. M. Audrey Brown  
 Mr. and Mrs. Edward W. Brown, Jr.  
 Ms. Elizabeth J. Bruen  
 Ms. Mary R. Brush  
 Mrs. Ronnie L. Buerger  
 Mr. Daniel Bunch  
 Mrs. Barbara J. Bundy  
 Ms. Mary Catherine Bunting  
 Mrs. Marjorie D. Byers  
 Mr. and Mrs. Kevin G. Byrnes  
 Miss Jeannette A. Cabeen  
 Mr. and Mrs. Thomas F. Cadwalader, Jr.  
 Mr. and Mrs. Forrest Calhoun  
 Mrs. Deborah Winston Callard  
 Mr. John E. Campbell  
 Mr. and Mrs. Frank A. Cappiello, Jr.  
 Mrs. Carolyn S. Carlson  
 Mr. and Mrs. Frank Carlucci  
 Mr. and Mrs. A. Thomas Carozza II  
 Mr. W. Seth Carus  
 Mr. Lawrence R. Case  
 Miss Louise P. Cavagnaro



Anthony Cecala and Vicky George  
 Mr. and Mrs. Evan Alevizatos Chriss  
 Mr. and Mrs. Carl F. Christ  
 Dr. and Mrs. William P. Ciesla  
 Mr. and Mrs. Benjamin R. Civiletti  
 Mrs. Dorothy L. Clapp  
 Mr. and Mrs. Harvey R. Clapp III  
 Mr. and Mrs. Brett D. Clifford  
 Mr. A. R. Cohen and Dr. J. M. Rubin  
 Mrs. Bette D. Cohen  
 Mrs. Randall C. Coleman  
 Mr. Howard P. Colhoun  
 Dr. and Mrs. John A. C. Colston, Jr.  
 Mrs. Jacqueline T. Copeland  
 Mr. and Mrs. William Couper  
 Dr. and Mrs. Anthony Courpas  
 Dr. John Covington and Dr. Claire Weitz  
 Mr. George William Cox, Sr.  
 Mr. and Mrs. Pierre R. Crosson  
 Mr. and Mrs. Robert Cumming  
 Ms. Gloria C. Cummings and Mr. David Bellamy  
 Mr. and Mrs. Gerald F. Curtin  
 Mr. Roger M. Dalsheimer  
 Mr. and Mrs. Barry D. Daly  
 Dr. Cornelius P. Darcy  
 Mr. and Mrs. William Dausch

Mr. and Mrs. Brad Davidson  
 Mr. Robert W. Davies  
 Mr. and Mrs. Herbert A. Davis  
 Mr. and Mrs. Michael L. DeLuca  
 Mr. and Mrs. Louis Denrich  
 Mr. and Mrs. Lewis H. Diuguid  
 Miss Helen V. Dixon  
 Mr. and Mrs. Jerry L. Doctrow  
 Mr. F. Michael Donahue  
 Dr. Rhoda M. Dorsey  
 Dr. and Mrs. Daniel B. Drachman  
 Mr. and Mrs. Stephen M. Drigotas  
 Dr. and Mrs. David C. Driskell  
 Mr. John L. Due  
 Mr. and Mrs. Edward K. Dunn, Jr.  
 Mr. and Mrs. John W. Dwyer  
 Ms. Laura E. Dyas  
 Mr. David J. Edmondson and  
 Mr. Robert G. Ricks  
 Mrs. Henry H. Eidman  
 Ms. Karen Elliott  
 Sonia Estruch, M.D.  
 Mr. and Mrs. Edward S. Evans III  
 The Reverend John Miles Evans  
 Ms. Amanda A. Falk  
 Mrs. Elizabeth Farrell

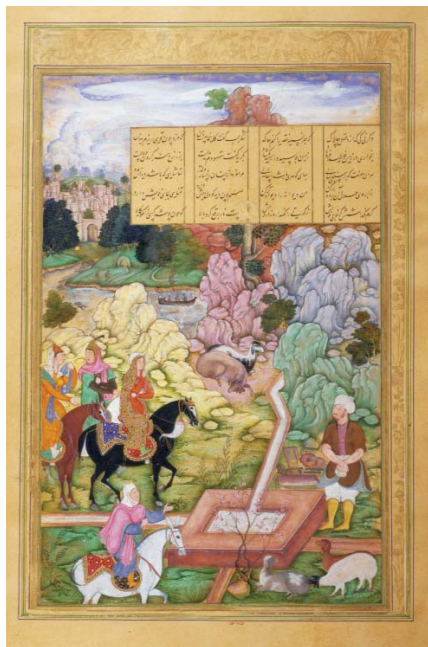
Mr. and Mrs. Nathan B. Feinstein  
 Mrs. Stephen W. Feiss  
 Mr. and Mrs. Paul D. Feldman  
 Dr. Charlotte Ferencz  
 Dr. and Mrs. Henry C. Ferguson  
 Mr. and Mrs. Ralph H. Ferrell  
 Ms. Jeannette Festa and Mr. Arthur F. Fergenson  
 Mr. and Mrs. Alex G. Fisher  
 Mr. and Mrs. Yale L. Fisher  
 Mr. and Mrs. David H. Fishman  
 Mr. and Mrs. Nelson I. Fishman  
 Dr. William N. Fitzpatrick  
 Mr. and Mrs. R. Hugh Allen Fitzpatrick  
 Mr. and Mrs. Clarence D. Fleming, Jr.  
 Ms. Nadine Fontan and Mr. Oliver Schein  
 Mr. Robert M. Forcey  
 Dr. and Mrs. Giraud V. Foster  
 Mr. and Mrs. Graham Fowler  
 Dr. Georgia A. Franyo  
 Mr. and Mrs. Stanley H. Freedman  
 Dr. Julie Ann Freischlag  
 Mr. and Mrs. Howard Friedel  
 Dr. Neal M. Friedlander and  
     Ms. Virginia K. Adams  
 Dr. and Mrs. William F. Fritz  
 Ms. Noreen Anne Frost  
 Dr. and Mrs. Earl P. Galleher, Jr.  
 Dr. and Mrs. Donald S. Gann  
 Mrs. Bernard M. Gann  
 Ms. Diana D. Gardner  
 Mr. and Mrs. Herbert S. Garten  
 Mr. Craig Gayhardt  
 Mr. and Mrs. Jonathan M. Genn  
 Mr. A. C. George and Dr. Kathryn George  
 Dr. and Mrs. Kenneth C. Gertsen  
 Mrs. Phoebe R. Gilchrist  
 Mr. and Mrs. Joseph L. Giles  
 Mr. Antonio Gioia  
 Mr. and Mrs. Gordon Hine Glenn  
 Ms. Joanna Davison Golden  
 Dr. and Mrs. Leonard H. Golombek  
 Mr. and Mrs. David A. Gomberg  
 Mr. Samuel Gompers

Mr. and Mrs. Irvin Gomprecht  
 Mr. and Mrs. Charles P. Goodell, Jr.  
 Mrs. Jennifer Googins  
 Mr. and Mrs. Andrew C. Goresh  
 The Gorfine Foundation  
 Mr. and Mrs. Thomas A. Gorman III  
 Dr. John D. Gottsch and Dr. Julia Haller Gottsch  
 Ms. Ingrid A. Graham  
 Mr. Edward Grant  
 Mrs. Susan M. Gray  
 Mr. and Mrs. Irvin Greif, Jr.  
 Dr. and Mrs. Bartley P. Griffith  
 Mr. Constantine Grimaldis  
 Mr. George Grose and Ms. Amy Macht  
 W. Arthur Grotz Foundation  
 Rita and Larry Guffey  
 Mr. and Mrs. Henry L. Gutman  
 Mr. and Mrs. Arthur J. Gutman  
 W. Lehman Guyton, M.D.  
 Mr. and Mrs. H. Hamilton Hackney, Jr.  
 Ms. Louise A. Hager  
 Dr. and Mrs. M. Reza Hagigh  
 Mrs. Lynn Hall and Mr. David Hall  
 Mrs. Barbara K. Halle  
 Mr. and Mrs. Peter Handal  
 Dr. and Mrs. Joshua Hare  
 Dr. Daniel P. Harley and  
     Ms. Kathryn J. Brown  
 Mr. Michael Harrison  
 Mr. and Mrs. Robert D. H. Harvey  
 Mrs. Claire P. Hayward  
 Mr. and Mrs. Donald R. Heacock  
 Mr. John D. Heasley and  
     Ms. Rosemary L. Shearer  
 Mr. and Mrs. Louis G. Hecht  
 Dr. and Mrs. James D. Hedberg  
 Mr. and Mrs. Frank Heintz  
 Dr. and Mrs. Robert G. Hennessy  
 Mr. Gerard J. Herr  
 Mr. and Mrs. Thomas B. Hess  
 Mr. and Mrs. Philip I. Heusler III  
 Dr. Peter Heymann and Ms. Janet Heald  
 Drs. W. Robert and Eva P. Higgins

Mr. and Mrs. Martin S. Himeles, Jr.  
 Mr. and Mrs. Richard A. Hirsch  
 Mr. Alan P. Hoblitzell, Jr.  
 Mr. and Mrs. Charles P. Hoffberger  
 Mr. and Mrs. LeRoy E. Hoffberger  
 Mr. William H. Hoffman  
 Mrs. Ann C. Hoffman  
 Ms. Katharine McLane Hoffman  
 The Honorable Barbara A. Hoffman and  
     Mr. Donald Hoffman  
 Mr. and Mrs. Louis Hogan  
 The Honorable C. Yvonne Holt-Stone and  
     Mr. William H. Stone  
 Mr. and Mrs. J. Woodford Howard, Jr.  
 Dr. and Mrs. Thomas E. Hunt, Jr.  
 Mrs. C. Raymond Hutchins  
 Mr. and Mrs. James R. Hyde  
 Captain and Mrs. Thomas J. Ingram III  
 Mr. A. Michael Jackson and  
     Ms. Laura R. Burrows-Jackson  
 Dr. and Mrs. Walter E. James



Mr. and Mrs. John D. Jarrett  
 Dr. and Mrs. Robert D. Jeffs  
 Mr. George W. Johnston  
 Mr. and Mrs. Oswald L. Johnston, Jr.  
 Mr. and Mrs. Harris Jones, Jr.  
 Mr. David Jones  
 Mr. and Mrs. James E. Judd  
 Dr. Karen M. Kabat  
 Mr. and Mrs. Peter Thomas Kandel  
 Mr. and Mrs. Nelson R. Kandel  
 Mr. and Mrs. Robert R. Kantorski  
 Miss Evelyn A. Karas  
 Mr. Jeffrey Karr  
 Mr. and Mrs. Dennis Karr  
 Mrs. Pat Karzai  
 Mr. and Mrs. Sheldon T. Katz  
 Miss Susan B. Katzenberg  
 Mr. and Mrs. Bradley R. Kays  
 Mr. James S. Keat and  
     Ms. Christine L. Thompson  
 Mrs. Leah E. Kemper  
 Ms. Patsy Gail Kennan  
 Mr. Patrick J. Kerins and  
     Ms. Terry H. Morgenthaler  
 Dr. Herbert L. Kessler and  
     Ms. Johanna Zacharias  
 Dr. Lawrence L. Kiefer  
 Dr. and Mrs. David Kim  
 Dr. and Mrs. William J. Kinnard, Jr.  
 Ms. Marilyn Koch  
 Mr. Thomas Kohlhepp and  
     Dr. Beverly Kohlhepp  
 Mr. Frederick Singley Koontz  
 Mr. and Mrs. David W. Kornblatt  
 Dr. and Mrs. John P. Kostuik  
 Mrs. Alexandra S. Kouwenhoven  
 Mr. Robert P. Kovalcik  
 Mr. and Mrs. James Krometis  
 Ms. Dorothy B. Krug  
 Mr. and Mrs. Albert W. Laisy  
 Mr. Robert Landau and  
     Dr. Barbara Landau  
 Mr. and Mrs. Leon LaPorte



Dr. and Mrs. Edward E. Lawson  
 Mrs. J. Lawrence Lears  
 Mr. and Mrs. Robert E. Lee IV  
 Mr. and Mrs. Yuan C. Lee  
 Mrs. Lucinda K. Leigh  
 Mr. Robert Z. Leizure and  
     Ms. Meredith B. Felter  
 Mr. Sidney Levenson  
 Mrs. Joseph M. Levi  
 Mrs. J. Elliot Levi  
 Mr. and Mrs. William M. Levy  
 Mr. and Mrs. Lemuel A. Lewie, Jr.  
 Mr. and Mrs. Craig Lewis  
 Dr. and Mrs. Edward F. Lewison  
 Mr. and Mrs. George D. Lintzeris  
 Mr. Gerard P. Lioi  
 Dr. and Mrs. John G. Lodmell  
 Paul and Martha M. Lohmeyer  
 Dr. Aurelia Loveman

Ms. Ellen K. Lucas  
 Mr. and Mrs. Samuel G. Macfarlane  
 Mr. and Mrs. Arthur W. Machen, Jr.  
 Mr. and Mrs. Clark F. MacKenzie  
 Mrs. Duncan H. Mackenzie  
 Ms. Carole Madow  
 Ms. Laurretta Rose Maisel  
 Mrs. Sarah W. Majoros  
 Mr. and Mrs. Richard P. Manekin  
 Dr. and Mrs. Sigmund H. Manne  
 Dr. Medea M. Marella  
 Dr. David H. Marlowe  
 Mrs. William G. Marr  
 Ms. Mary-jo Mather  
 Mr. and Mrs. E. Trail Mathias  
 Mr. and Mrs. Jordon L. Max  
 Mr. Philip R. Mayhew  
 Mr. and Mrs. Michael P. McCarthy  
 Mr. and Mrs. William J. McCarthy  
 Dr. H. Berton McCauley  
 Mr. and Mrs. Edward P. McCracken  
 Mr. and Mrs. James M. McDonald  
 Dr. Jill E. McGovern and Dr. Steven Muller  
 Mr. Gary R. McKenzie  
 Mr. and Mrs. James I. Melhorn  
 Mr. Andrew F. Meredith  
 Ms. Dorothy R. Mikoloski  
 Mrs. John H. Miller  
 Mr. and Mrs. Eric Miller  
 Ms. Linda L. Miller  
 Mr. Lloyd Minor and Ms. Lisa Keamy  
 Mr. and Mrs. Robert N. Mirelson  
 Mr. and Mrs. Mark C. Mobley  
 The Moore Family Foundation  
 Mr. J. L. Malcolm Morris  
 Mr. Charles A. Morse, Jr.  
 Mr. and Mrs. M. Peter Moser  
 Mr. and Mrs. Peter C. Muncie  
 Mr. and Mrs. William P. Murphy  
 Mr. and Mrs. Roy Myers  
 Mrs. Annette S. Nagler  
 Dr. Catherine A. Neill  
 Dr. and Mrs. Paul M. Ness



Mr. Irving J. Neuman  
 Mrs. Loxley Fitzpatrick Nichols  
 Ms. Michele Nido and Ms. Mary Jo Nido  
 Mr. and Mrs. George A. Nilson  
 Mr. and Mrs. Edmond B. Nolley, Jr.  
 Mrs. Howard G. Norton  
 Mr. and Mrs. Douglas G. Ober  
 Mrs. Daniel M. O'Connell  
 Dr. and Mrs. John B. O'Donnell  
 Dr. and Mrs. Charles O'Donovan III  
 Mr. Wolfgang Oehme  
 Mr. and Mrs. R. Bentley Offutt  
 Mrs. Helen W. Ohrenschall  
 Mrs. A. Douglas Oliver  
 Ms. Elaine H. O'Neal  
 Mr. and Mrs. Brian Hoen O'Neil  
 Ms. Jo-Ann Mayer Orlinsky  
 Mr. and Mrs. Eric G. Orlinsky  
 Mr. and Mrs. Jon W. Paisley  
 Mr. and Mrs. C. Harvey Palmer, Jr.  
 Mr. and Mrs. George H. Pappas  
 Mandip Parmar and Simmi Chawla  
 Mr. and Mrs. Richard Parsons

Ida Kemp & William M. Passano Family  
 Foundation, Inc.  
 Dr. and Mrs. Gary R. Pasternack  
 Mr. and Mrs. Richard M. Patterson  
 Ms. Nancy Patz  
 Ms. Pamela D. Paulk  
 Mr. and Mrs. Peter Pennoyer  
 Dr. and Mrs. James M. Pepple  
 Mr. Thomas P. Perkins III  
 Dr. and Mrs. Anthony Perlman  
 Mr. and Mrs. Peter Pervi  
 Ms. Martha Ann Peters  
 Mr. James Petrica  
 Dr. and Mrs. Owen Martin Phillips  
 Dr. and Mrs. Richard N. Pierson III  
 Mr. and Mrs. John Pignataro  
 Dr. John J. Pilch  
 The Reverend R. Douglas Pitt  
 Mr. and Mrs. Albin MacDonough Plant  
 Mr. and Mrs. Morton B. Plant  
 Ms. Carla E. Polk  
 Dr. and Mrs. Conrad R. Pope  
 The Isaac & Leah M. Potts

Foundation, Inc.  
 Mr. and Mrs. Roger G. Powell  
 Mr. and Mrs. John Brentnall Powell, Jr.  
 Mr. and Mrs. Garrett Power  
 Dr. and Mrs. Thomas Pozefsky  
 Dr. and Mrs. Frederick G. Preis  
 Mr. Joseph L. Press  
 Mrs. Herbert R. Preston  
 Mrs. Kenneth C. Proctor  
 Mr. and Mrs. John B. Ramsay III  
 Mr. and Mrs. Rajeev D. Ranadive  
 Dr. and Mrs. Jonas R. Rappeport  
 Mr. and Mrs. Dennis Rawlins  
 Dr. G. Edward Reahl, Jr.  
 Mr. and Mrs. Roger D. Redden  
 Mr. and Mrs. Oliver H. Reeder  
 Dr. Claudia Resch and Dr. Peter Morse  
 Keenan Rice  
 Mr. and Mrs. Arnold I. Richman  
 Ms. Robin Lee Ridder  
 Mr. and Mrs. Francis G. Riggs  
 Miss Eleanor A. Robbins  
 Drs. Paul E. and Mary Roberts  
 Mr. and Mrs. William G. Robertson, Jr.  
 Mr. and Mrs. Richard T. Roca  
 Mrs. Sylvia L. Rogers  
 Dr. and Mrs. Charles A. Rohde  
 Mr. and Mrs. William S. Roohan  
 Drs. James and Audrey Rooney  
 Ms. Wendy S. Rosen  
 Mr. and Mrs. Lee B. Rosenberg  
 Mr. and Mrs. Benjamin Rosenberg  
 Mrs. Esther Rosenbloom  
 Mr. and Mrs. Winstead Rouse  
 Mr. Robert J. Ryan  
 Ms. Diane L. Ryan  
 Mr. and Mrs. John B. Sacci  
 Mr. and Mrs. Stephen H. Sachs  
 Dr. and Mrs. Marvin Sager  
 Monica and Arnold Sagner  
 Dr. and Mrs. Michael Salcman  
 Mr. and Mrs. Charles H. Salisbury, Jr.

Mr. Michael Salsbury and  
Ms. Donna Triptow  
Mr. Edward Saltzberg and  
Ms. Sharon H. Schoeller  
Mr. and Mrs. William A. Samios  
The Honorable Paul S. Sarbanes and  
Mrs. Sarbanes  
Ms. Avery B. Sargent and  
Dr. Stephen Sargent  
Mr. and Mrs. John A. Saxton  
Mr. and Mrs. David P. Scheffenacker



Mr. and Mrs. James S. Schmidt  
Mr. and Mrs. Eugene H. Schreiber  
Dr. and Mrs. Robert K. Schreter  
Mr. and Mrs. Jeff Schumer  
Mr. and Mrs. Brooke Schumm III  
Mr. and Mrs. David M. Schwaber  
Mr. Donald P. Seibert  
Ida & Joseph Shapiro Foundation  
Mr. and Mrs. Stephen D. Shawe  
Jane M. Sheets  
Mr. and Mrs. John W. Sheldon  
Miss Martha E. Shelhoss  
Dr. and Mrs. Charles T. Shortall  
Mr. Bradley A. Siersdorfer  
Mr. and Mrs. Sidney Silber  
Mr. and Mrs. Irvin Silen  
Dr. and Mrs. J. Thayer Simmons  
Mr. and Mrs. Claude O. Skelton  
Dr. Mary S. Slusser  
Mr. and Mrs. Robert N. Smelkinson  
Miss Carolyn L. Smith  
Ms. Judy L. Smith  
Mr. and Mrs. Mitchell Smith  
Mr. and Mrs. Richard C. Smith  
Mr. Michael K. Smith  
Mr. and Mrs. Turner B. Smith  
Mr. James A. Snead  
Dr. Charles Snipes  
Dr. and Mrs. Solomon H. Snyder  
Mrs. Rudolph Sobernheim  
Dr. and Mrs. Theodore S. Sobkov  
Ms. Margaret F. Solnick  
Mr. and Mrs. Frank P. L. Somerville  
Mr. Walter Sondheim, Jr.  
Dr. and Mrs. Donald B. Spangler  
Dr. and Mrs. Charles S. Specht  
Dr. William G. Speed III  
Rita St. Clair and Joseph Sheppard  
Mr. and Mrs. George P. Stamas  
Mr. and Mrs. James Stanard  
Mr. Davis L. Statton, Jr.  
Mr. William O. Steinmetz and  
Ms. Betty Cooke

Mr. and Mrs. Carleton W. Sterling  
Mr. Albert Henry Stevenson  
Mr. and Mrs. C. Van Leuven Stewart  
Mr. Gordon M. Stick, Jr.  
Mrs. Geary L. Stonesifer, Jr.  
Ms. Jane Stricklen  
Mr. and Mrs. William J. Stromberg  
Mr. and Mrs. M. Barry Strudwick  
Mr. and Mrs. Bruce C. Stuart  
Mr. and Mrs. Michael P. Sullivan  
Mr. and Mrs. Thomas G. Swales  
Dr. and Mrs. Edgar Sweren  
Mr. and Mrs. D. Winston Tabb  
Mr. and Mrs. Richard B. Talkin  
Mr. and Mrs. James R. Tarrant  
Dr. Martin Taubenfeld  
Mr. and Mrs. W. Stewart Taylor  
Drs. Bruce T. and Ellen Taylor  
Mr. Michael Terrin and Ms. Bess Keller  
Mr. and Mrs. Robert J. Thieblot  
Mr. and Mrs. Gary L. Thomas  
Dr. Freeda E. Thompson  
Mrs. R. Carmichael Tilghman  
Mr. and Mrs. Edward A. Tomlinson  
Mr. and Mrs. Brian B. Topping  
Dr. and Mrs. Craig A. Townsend  
Towson University Foundation, Inc.  
Mr. Fred A. Trenkle  
Dr. I. Ridgeway Trimble  
Mr. and Mrs. T. Ridgeway Trimble  
Barbara J. Trimble  
Dr. and Mrs. Savas Tsakiris  
Mr. and Mrs. David F. Tufaro  
Mr. and Mrs. James A. Ulmer III  
Mr. and Mrs. George Van Buskirk  
Ms. Jennifer E. Vollmer and  
Mr. David N. Copas  
Mr. and Mrs. Michael Waldman  
Mr. Semmes G. Walsh  
Ms. Pearl C. Walsh  
Mr. and Mrs. John P. Ward  
Mr. and Mrs. Thomas D. Washburne, Jr.  
Ellen P. Wasserman

The Honorable Thomas J. S. Waxter, Jr.  
and Mrs. Waxter  
Dr. and Mrs. Karl H. Weaver  
Mr. and Mrs. Brian D. Weese  
Mr. and Mrs. Timothy Weglicki  
Mrs. Robert M. Weidenhammer  
Mr. and Mrs. Daniel J. Whelton  
Dr. and Mrs. Robert J. Wicks  
Mr. and Mrs. Edward A. Wiese  
Mr. Randall W. Wilke  
Dwight R. and Lindsey W. Williams  
Mr. and Mrs. J. Harlan Williams  
Mr. and Mrs. Terry F. Wills  
Ms. Jane A. Wilson  
Dr. and Mrs. Henry B. Wilson  
Mrs. Edna Winik  
Mr. and Mrs. Thomas W. Winstead, Jr.  
Ms. Judy Witt and Mr. Phil Pendleton  
Dr. and Mrs. Frank Witter  
Mr. and Mrs. Edwin J. Wolf  
Dr. Richard F. Wormsbecher and  
Dr. Joanna M. Pyper  
Mr. Richard Wright and  
Ms. Ada D. Haunschild  
Mr. and Mrs. Thomas W. Wright  
Mr. Michael H. Yerman and  
Mr. Marc Hayes  
Mr. and Mrs. Albert A. Young  
Mr. and Mrs. Thomas G. Young III  
Drs. J. B. and Annelies S. Zachary  
Mr. and Mrs. Calman J. Zamoiski, Jr.  
Dr. and Mrs. Philip D. Zieve  
Mr. and Mrs. Samuel E. Zimmerman

## CORPORATE PARTNERS

### Founders

AEGON USA  
Brown Investment Advisory & Trust  
Company  
Whiting-Turner Contracting Co.  
T. Rowe Price Associates, Inc.

### Connoisseur

Agora, Inc.  
Hamilton Associates, Inc.  
Mercantile Safe Deposit and Trust  
Company  
Valley Motors, Inc.  
Wilmington Trust F.S.B.

### Collector

Maryland Horse Breeders Association

### Master

Deutsche Banc Alex. Brown  
Goldman, Sachs & Company  
Legg Mason, Inc.  
Lord Baltimore Capital Corporation  
M&T Bank  
Procter & Gamble Cosmetics, Inc.  
Sotheby's

### Artisan

American Trading and Production  
Corporation  
AON Group

Bank of America, N.A.  
Classic Catering People  
DLA Piper Rudnick Gray Cary  
Hogan & Hartson  
Linwoods-Due  
McCormick & Company, Inc.  
Northrop Grumman Corporation  
Provident Bank of Maryland  
The Black & Decker Corporation

### Craftsman

Alexander Baer Associates, Inc.  
American Urological Association, Inc.  
Art Seminar Group, Inc.  
Ballard Spahr Andrews & Ingersoll, LLP  
Cho Benn Holback & Associates  
D R Brasher  
General Motors Baltimore Assembly Plant  
Kallman McKinnell & Wood  
Architects, Inc.  
KPMG LLP  
Macy's East, Inc.  
Nottingham Properties, Inc.  
The Oxford Club



Saul Ewing LLP  
Slack Cordes, LLP  
USI Companies Inc.  
W.R. Grace & Company  
Wachovia Wealth Management  
Warfield-Dorsey Company, Inc.  
Ziger/Snead LLP Architects  
Zurich North America SAFE

### *Donor*

AAI Corporation  
Bay Imagery, Inc.  
Bendann Art Galleries  
Bernstein Investment Research and  
Management  
Bolton Partners, Inc.  
Carrollton Bank  
Chateau Builders, Inc.  
Daft McCune Walker, Inc.  
Eastern Savings Bank  
General Motors Baltimore Assembly Plant  
Goetze's Candy Company  
Harbor Court Hotel  
O.T. Neighoff & Sons, Inc.  
Robert Manekin Partners, LLC  
S. Kann Sons Company Foundation, Inc.  
Shapiro, Sher, Guinot & Sandler  
SunTrust Bank  
Tydings & Rosenberg LLP

## **SPECIAL PROJECT SUPPORT**

### *Education*

The Annie E. Casey Foundation  
The Helen P. Denit Trust  
The Goldsmith Family Foundation, Inc.  
Maryland State Department of Education  
MBNA Foundation  
M & T Bank  
National Endowment for the Arts  
The Palmer Foundation  
St. Paul Travelers Foundation  
The Women's Committee of the Walters  
Art Museum

Mrs. Judith Gluckman  
Mrs. Christine K. Lambrou and  
Dr. Constantine G. Lambrou  
Mrs. Bettye Leibowitz  
Miriam Lodge K.S. B., Inc.  
Mrs. Daniel M. O'Connell  
Ms. Betty H. Schweizer

### *Exhibition Support*

#### **The Road to Impressionism**

The Women's Committee of the Walters  
Art Museum

#### **Stubbs & the Horse**

Alex. Brown & Sons Charitable  
Foundation, Inc.  
Audi of Hunt Valley  
Mr. and Mrs. Frank A. Bonsal, Jr.  
Brown Investment Advisory Trust  
Company  
Mr. Michael P. Cataneo  
The Stiles Ewing Tuttle Charitable Trust;  
Mr. Stiles T. Colwill and Mr. Jonathan  
Gargiulo  
Mr. and Mrs. Richard S. Davison  
Fancy Hill Foundation  
Mr. and Mrs. Christopher Goelet  
Mr. and Mrs. H. Thorne Gould  
Howard and Martha Head Fund  
The Kinsley Family Foundation  
Legg Mason Trust, F.S.B.  
Maryland Horse Breeders Association and  
Dark Hollow Farm  
Maryland Saddlery; Ms. Joanne Hope  
Birsh and Mr. Steven Plakotoris  
Miss Dorothy McIlvain Scott  
Sotheby's  
Mr. and Mrs. M. David Testa  
Mr. and Mrs. Albert A. Young



#### **The Essence of Line: French Drawings from Ingres to Degas**

Mr. and Mrs. Peter L. Bain  
National Endowment for the Arts  
Mrs. Eleanor Abell Owen  
The Richard C. von Hess Foundation  
Mr. and Mrs. Jay M. Wilson

#### **Dressed in Gold: Books of the Italian Renaissance** AGORA, Inc.

#### **Sacred Arts and City Life: The Glory of Medieval Novgorod**

The Concordia Foundation  
The Women's Committee of the Walters  
Art Museum  
Trust for Mutual Understanding

**Pearls of the Parrot of India**

The E. Rhodes & Leona B. Carpenter  
Foundation

**Telling the Tales of Kings: A Medieval  
Picture Bible from the Morgan Library**

National Endowment for the Humanities

**Technology Funders**

Mr. and Mrs. Lee E. Alderdice  
City of Baltimore  
Mr. and Mrs. Richard S. Davison  
Maryland Business Works  
Anonymous

**Other Restricted Gifts**

Baltimore-Piraeus Sister City Committee  
Mr. and Mrs. John C. Cooper III  
Institute of Museum and Library Services  
The Samuel H. Kress Foundation  
The Dr. Frank C. Marino Foundation  
Mr. and Mrs. Nicholas Mangione  
Mrs. Robert P. Mittelman  
Mr. Georgi R. Parpulov

The Jim and Patty Rouse Charitable  
Foundation

The Stockman Family Foundation  
Mrs. William C. Trimble, Sr.  
Mr. and Mrs. M. David Testa

**GALA 2004**

**\$25,000**

Constellation Energy Group, Inc.  
DURON Paints and Wallcoverings  
Legg Mason, Inc.  
Mr. and Mrs. Arthur B. Modell  
Betsy and George Sherman  
Laureate Education, Inc.  
T. Rowe Price Group

**\$10,000**

Millicent and Peter Bain  
Brown Advisory  
Rosalee and Richard Davison  
Deutsche Bank Alex. Brown, Inc.  
Philip D. English and E. Rogers Novak, Jr.  
Andrea and John Laporte  
M&T Bank

Marilyn and George Pedersen  
Mercantile-Safe Deposit and Trust

Company  
Piper Rudnick  
Nancy and George Roche  
Rosemore, Inc.  
Mr. and Mrs. M. David Testa  
Washington Gas Light Company

**\$5,000**

Cynthia and Lee Alderdice  
Atlantic Trust  
Baltimore Ravens  
Bank of America  
The Baltimore Sun  
Betsy and John Bond  
Cenveo  
Winnie and Neal Borden and Venable, LLP  
Chevy Chase Bank  
Suzi and David Cordish  
DAP Products  
Saul Ewing, LLP  
Hadley and Chris Feiss  
Gallagher Evelius & Jones LLP  
Hamilton & Associate, Inc.  
KPMG, LLP  
Kramon & Graham P.A.  
Lockheed Martin  
Mary Kay and Chuck Nabit  
John Paterakis  
Dyson and Peter Stockman  
SunTrust  
Wilmer Cutler Pickering Hale and  
Dorr, LLP  
Wilmington Trust

**Special Thanks**

Bin 604 Wine Sellers  
Cenveo  
The Classic Catering People  
Hannah and Thorne Gould



## ART BLOOMS 2005

### *Benefactor*

Betsy and John Bond  
 Richard and Hildy Eliasberg  
 Robert and Betsy Feinberg  
 Jean Geesey  
 Darlene and Austin George  
 Mary Ellen and Leon Kaplan  
 Carolyn and Michael Meredith  
 Kathy and Roger Novak  
 George and Marilyn Pedersen  
 Nancy and George Roche  
 Dorothy McIlvain Scott  
 Judy and Peter Van Dyke

### *Supporters*

Dee and Aristides Alevizatos  
 Peter and Millicent Bain  
 Wendy and Bill Brody  
 Gina Campbell  
 Hartley and Randall Etheridge  
 John and Berthe Ford

Barbara and Sam Himmelrich  
 Harry and Cathryn Lundy  
 Cynthia R. Mead  
 Petey and John O'Donnell  
 Anna and Harry Pappas  
 Mr. and Mrs. Wm. M. Passano, Jr.  
 Jay M. Wilson

### *Patrons*

Missy and Ross Adams  
 Anne and Sandy Apgar  
 Dan and Pat Baker  
 Dale Balfour  
 Chris and Herb Bangs  
 Ken and Margot Bates  
 Joanne and Herbert Belgrad  
 Kathleen and Fred Brosi  
 Gita and Deepak Chowdhury  
 Connie and Andrew Chriss  
 Betty Cook and Ward Steinmetz  
 Sidney Daniels  
 Donna M. Decker  
 Diane and William Donahue  
 Christopher and Hadley Feiss  
 Whit and Mary Louise Foster  
 Maria and Dick Gamper  
 Joanne Golden  
 Mrs. Ogden C. Gorman  
 Hannah Gould  
 Barbara Guarnieri  
 Tsognie and Douglas Hamilton  
 Mrs. E. Phillips Hathaway  
 Ellen and Patrick Jarosinski  
 Mr. and Mrs. John H. Jones, Jr.  
 Marion and Peter Kandel  
 Dr. and Mrs. Haig Kazazian  
 Margaret D. Keller  
 Elisabeth Kiersarsky  
 Kim and John Leahy  
 Reva and Lemuel Lewie  
 David and Michelle Nilssen McNally  
 Patricia McPhail  
 Wade and Nancy Meadows

Faith and Ted Millsbaugh  
 James and Dessie Moxley  
 Mr. and Mrs. Douglas Ober  
 Bill and Nan Paternotte  
 Charles and Nancy Pecot  
 Beth Pierce  
 Patricia Ransom  
 Savilla and Charles Rohde  
 Mrs. James W. Rouse  
 Adrienne and Neal Salomon  
 Carol and Stephen Sandler  
 Stephen and Betsy Scott  
 Ellen Sherwin  
 Barbara and Thayer Simmons  
 Peter and Dyson Stockman  
 Dr. and Mrs. Thomas Tarplay  
 Mrs. R. Carmichael Tilghman  
 Sharon and Stephen Waters  
 Elizabeth Weese  
 Dr. and Mrs. Lee Williams  
 Gladys Winter  
 Ann and Hiram Woodward

### *Friends*

Mrs. David W. Barton, Jr.  
 Winnie and Neal Borden  
 Polly Cameron  
 Katherine Singley Dannenberg  
 Rosalie Davison  
 Mrs. Alonzo Davison  
 Virginia Decker  
 Deborah and Philip English  
 Helen Gilbert  
 A.C. and Kathryn George  
 Barbara Halle  
 Charles Holman  
 Mrs. Robert Levi  
 Georgia Linthicum  
 Mr. and Mrs. Clark F. Mackenzie  
 Bernard Manekin  
 Ruth Marder  
 Mary-jo Mather  
 Ann Offut





Anne M. Pinkard  
 Reverend Douglas Pitt  
 Joan Rambo  
 John Rockwell  
 Carol and Steve Schimpff  
 Lee and Tom Schwark  
 Mary Slusser  
 Joan Sobkov  
 Tykden Streett  
 Josephine Sutland  
 Ellen and Thomas Webb  
 Laura Wilson

#### BEQUESTS RECEIVED

E. Dewitt Battams  
 Phyllis E. Benson  
 Ellen Bruce Bordley  
 Priscilla Ann Cabeen Howard

Catherine F. Garis  
 Priscilla A. Howard  
 Justine L. Keidel  
 Helen Morris Reich  
 Margaret Zipp

#### GIFTS RECEIVED IN HONOR OF

*Mr. and Mrs. Peter Bain*

Ms. Gail S. Bain

*Mrs. Katherine Brosi*

Ms. Mary-jo Mather

*Mr. Manuel Dupkin II*

Mr. and Mrs. Carl E. Hecht

*Mr. and Mrs. W. Boulton Kelly, Jr.*

Mr. and Mrs. Richard S. Davison

*Mrs. Joseph M. Levi*

Mr. and Mrs. Bernard Manekin

*Mr. and Mrs. Chuck J. Nabit*

Mr. and Mrs. Michael B. Glick

*The Reverend R. Douglas Pitt*

Mrs. Daniel M. O'Connell

Mr. and Mrs. Hugh L. Stierhoff

*Dr. and Mrs. Hiram W. Woodward, Jr.*

Mr. Leedom Lefferts and  
 Ms. Louise Allison Cort

#### GIFTS RECEIVED IN MEMORY OF

*Mrs. Charlotte Holt*

Mr. and Mrs. Richard S. Davison

*Mr. Myron E. Johnston*

Ms. Jan Angel

*Ouida Kallmyer*

Mr. Bernard A. LeBeau

*Dr. Joseph Reidy*

Dr. and Mrs. Thomas E. Schwark

*Mary Ellen Reno*

Mrs. Jane C. Cross

Mr. and Mrs. William T. Conklin III

Ms. Irma V. Fowler

Mr. and Mrs. Jan K. Guben

Mr. and Mrs. John Harlan

Ms. Dorothy B. Krug

Professor Anne Laidlaw

Mrs. Isaac C. Lycett, Jr.

Mr. and Mrs. Lee M. Miller

Mr. and Mrs. Robert E. Noll

Mr. William H. Perkins and Ms. Amy K.  
 Huntoon

Mr. and Mrs. Ceecil A. Rush  
Mr. and Mrs. John L. Taylor  
Mr. and Mrs. Robert M. Thomas  
Mr. James D. Wright

### *Francis Marion Staley*

Ms. Mary W. Austin  
Baltimore Exxon Service Club, Inc., 54322  
Mr. and Mrs. H. K. Daly  
Dr. and Mrs. Walter E. Dandy, Jr.  
Mr. and Mrs. Richard S. Davison  
Mr. Robert N. Francis, Jr.  
Ms. R. M. Limpert  
Ms. Adelaide E. Meiser  
Mr. and Mrs. Thomas E. Mitchell  
Ms. Linda S. Napora  
Ms. Roberta Parsons

### *Mrs. Mitzi P. Weingarden*

Mrs. Daniel M. O'Connell

### *Mrs. G. Page West*

Mr. and Mrs. Richard S. Davison

## LIFE MEMBERS

Mr. and Mrs. Lee E. Alderdice  
Miss Ann Callan  
Mr. and Mrs. Manuel Dupkin II  
Dr. and Mrs. Milton T. Edgerton  
Mr. Richard Hovey Gamble  
Captain and Mrs. Daniel Hunt  
Mrs. Robert D. H. Levi  
Mr. Harvey M. Meyerhoff  
Mrs. Diana Edwards Murnaghan  
Mr. and Mrs. Thomas S. Nichols  
Mrs. Bernard H. Ridder, Jr.  
Miss Dorothy McIlvain Scott

## NAMED ENDOWMENT FUNDS

The following named funds are part of the Walters' permanent endowment and were established with gifts of \$250,000 or more.

### *The Jacob and Hilda Blaustein Endowment Fund and the Louis and Henrietta Blaustein Endowment Fund*

In 1989, the trustees of the Jacob and Hilda Blaustein Foundation and of the Louis and Henrietta Blaustein Foundation established these funds at the Walters to provide support for essential programmatic activities, such as permanent and temporary exhibitions, publications, education programs, and visiting specialists.

### *The Laura F. Delano Fund*

Miss Delano, niece of Henry Walters, served as a trustee of the Walters for 28 years and took particular interest in the collections of jewelry and portrait miniatures. Upon her death in

1972, she left a significant bequest to the museum's endowment, with income unrestricted.

### *Alexander Brown Griswold Fund*

Alexander Brown Griswold, an eminent scholar of Thai art, greatly enriched the Walters' collection of Asian art with the gift of his large and important collection of Thai and other Asian sculpture. In addition, he established this endowment fund, with income unrestricted.

### *The Robert and Nancy Hall Assistant Curatorship*

Museum patrons Robert and Nancy Hall established this endowed mid-level curatorial position in response to the challenge from the Andrew W. Mellon Foundation.

### *W. Alton Jones Acquisition Fund*

In 1983, the W. Alton Jones Foundation made a major gift to the Walters to establish an endowment fund whose income would be used to purchase works of art.



### *James A. Murnaghan Curatorial Chair in Renaissance and Baroque Art*

James A. Murnaghan, the distinguished Irish jurist and art collector, was the uncle of the Hon. Francis D. Murnaghan, Jr., Chairman Emeritus of the Walters' Board of Trustees. The income from this fund supports the position of curator of Renaissance and baroque art.

### *The Perlman Memorial Fund*

Philip B. Perlman was one of the original members of the Walters' Board of Trustees, which he established in 1932 following Henry Walters' bequest to the City of Baltimore in 1931. He became President of the Board of Trustees in 1955 and remained in that position until his death in 1960. His bequest, and a generous donation by an anonymous donor, funded the Perlman Memorial Fund, with income unrestricted.

### *Mr. and Mrs. Thomas Quincy Scott Curatorial Chair for Asian Art*

This fund was established in 1997, in

response to a challenge from The Andrew W. Mellon Foundation, with income restricted to support of the position of Curator of Asian Art.

### *The Loretta Lee Ver Valen Fund*

This fund was established in 2001 with a bequest from the estate of Mrs. Loretta Lee Ver Valen. It was given to honor the memory of Mrs. Ver Valen's mother. The income from this fund is to be used to support the acquisition of works of art.

### *The Jay M. Wilson Endowment Fund*

Jay M. Wilson was President of the Walters' Board of Trustees from 1979 to 1985, Chairman from 1985 to 1988, and President again from 1991 to 1994. Established in 2000 by his family, this fund is designated for endowment, with income unrestricted.

*While every effort has been made to list donors accurately, should you notice an error, please accept our apologies. Please notify us at 410-547-9000, ext. 295, with the correction.*

## **MAJOR GIFTS FROM THE ANDREW W. MELLON FOUNDATION**

The Mellon Foundation provides important support of art museums throughout the United States. Over the years, it has bolstered conservation, scholarly research and publications, curatorial staff, and training with the following gifts to the Walters Art Museum:

### ***The Mellon Conservation Fellowship Fund***

Established in 1982 by The Andrew W. Mellon Foundation, this fund provides annual income to support the Walters' program that trains post-graduate fellows in conservation.

### ***The Andrew W. Mellon Foundation Fund for Scholarly Research and Publications***

In 1985, The Andrew W. Mellon Foundation established a fund to support research and publications at the Walters.

### ***The Andrew W. Mellon Foundation Curatorship for Ancient Art***

The position of curator of ancient art is named in honor of The Andrew W. Mellon Foundation, which, through a challenge grant awarded in 1996, helped to endow two senior curatorial positions.

### ***The Andrew W. Mellon Foundation Endowment for Mid-Level Curatorship***

In 2004, the Walters completed the matching requirements to receive an endowment from the Mellon Foundation restricted to the support salaries, research, and travel costs for two mid-level curatorial positions. These are not affiliated with specific collection areas, but can be deployed where the museum has greatest need.



# STAFF

## DIRECTOR'S OFFICE

Gary Vikan, *Director*  
William R. Johnston, *Associate Director*  
Kate Markert, *Associate Director of  
External Affairs and Operations*  
Nancy Zinn, *Assistant to the Director,  
Director of Exhibitions*  
Cynthia Roberts, *Secretary to the  
Director*  
Mae Kocis, *Secretary to the Board*

## ADMINISTRATION

Harold Stephens, *Senior Director for  
Administration*  
Brenda Jackson, *Human Resources  
Manager*  
Karen Harris, *Human Resources  
Administrator*  
James Huebler, *Controller*  
Mary Cromwell, *Finance Coordinator*  
Stephanie Danesie, *Finance Assistant*  
Jessica Voorhees, *Business Services  
Manager*  
Jessica Figard, *Business Services  
Manager*  
Eric Domineck, *Mailroom Clerk/AV  
Technician*  
Deborah Swords, *Receptionist*

## CONSERVATION AND TECHNICAL RESEARCH

Terry Drayman-Weisser, *Director of  
Conservation and Technical Research*  
Eric Gordon, *Head of Paintings  
Conservation*  
Abigail Quandt, *Head of Book and  
Paper Conservation*  
Margaret Craft, *Senior Conservator,  
Objects*  
Julie Lauffenburger, *Senior Conservator,  
Objects*  
Elissa O'Loughlin, *Senior Conservator,  
Paper*  
Karen French, *Associate Conservator,  
Paintings*  
Paul Hepworth, *Assistant Conservator,  
Paper*  
Gillian Cook, *Assistant Conservator,  
Paintings*  
Rhianon Dowling, *Administrative  
Assistant*  
Sue Ann Chui, *Mellon Fellow, Paintings*  
Jennifer Giaccari, *Conservation Scientist*

## CURATORIAL AFFAIRS

Regine Schulz, *Director of Curatorial  
Affairs, Curator of Ancient Art*  
C. Griffith Mann, *Co-Director of  
Curatorial Affairs, Associate Curator of  
Medieval Art*  
William R. Johnston, *Senior Curator of  
18th- and 19th-Century Art*  
Eileen Kahng, *Curator of 18th- and 19th-  
Century Art*  
William Noel, *Curator of Manuscripts  
and Rare Books*  
Joaneath Spicer, *Curator of Renaissance  
and Baroque Art*  
Hiram Woodward, *Research Curator,  
Asian Art*  
Sabine Albersmeier, *Associate Curator  
of Ancient Art*  
Morten Hansen, *Assistant Curator of  
Renaissance and Baroque Art*



Martina Bagnoli, *Assistant Curator of Manuscripts and Rare Books*  
 Simon Kelly, *Mellon Fellow, 18th- and 19th-Century Art*  
 Shelley MacLaren, *Bates Fellow, 18th- and 19th-Century Art*  
 Richard Leson, *Zawryl Krieger Fellow, Manuscripts and Rare Books*  
 Kathleen Emerson-Dell, *Project Coordinator, Charles Street Building Reinstallation*  
 Alice Petty, *Research Assistant*  
 Elizabeth Flood, *Curatorial Division Administrator*  
 Deborah Horowitz, *Editor/Manager of Curatorial Publications*  
 Christianne Henry, *Curatorial Publications Assistant*  
 Nancy Patterson, *Assistant Librarian*  
 Susan Tobin, *Head of Photography*  
 Jennifer Campbell, *Photography Technician*  
 Michael Gunn, *Photo Services Assistant*  
 Joan Elisabeth Reid, *Chief Registrar*  
 George Chang, *Assistant Registrar*  
 Betsy Dahl, *Assistant Registrar*  
 Barbara Fegley, *Associate Registrar*  
 Kate Siplon, *Collections Database Administrator*  
 Michael McKee, *Senior Collections Technician*  
 Gil Furoy, *Collections Technician*  
 William Goode, *Collections Technician*

## DEVELOPMENT

Jill Barry, *Director of Development*  
 T. Ridgeway Trimble, *Manager of Planned Giving*  
 Gretchen Haubner, *Manager of Corporate Relations*  
 Holly Fritz, *Grant Writer*  
 Marietta Nolley, *Special Events Manager*  
 Joy Heyrman, *Consultant*  
 Nicole Brennan, *Membership Manager*  
 Shirley Plank Thomas, *Senior Membership Assistant*  
 Elissa Winer, *Membership Assistant*  
 DeLisa Swiger, *Membership Sales Assistant*  
 Jennifer Neal, *Membership Sales Assistant*  
 Robert Zimmerman, *Manager of Rental Sales*  
 Alice McAuliffe, *Manager of Retail Operations*  
 Kevin Donnelly, *Assistant Store Manager*  
 Judith Hurlock, *Assistant Store Manager*  
 Deborah Cho, *Lead Sales Assistant*  
 Marion Clea, *Administrative Assistant*

## EDUCATION

Jacqueline Copeland, *Director of Education and Public Programs*  
 Amanda Kodeck, *Manager of School Programs*

Amy Charleroy, *Senior Coordinator, School Programs*  
 Meghan Fritz, *Senior Coordinator, School Programs*  
 Erin Noseworthy, *Education Assistant, School Programs*  
 Melinda Evasius, *Manager of Adult Programs*  
 Katherine Place, *Adult Programs Assistant*  
 Kathleen Nusbaum, *Manager of Children and Family Programs*  
 Kirsten Schafer, *Children and Family Programs Coordinator*  
 Emily Blumenthal, *Children and Family Programs Coordinator*  
 John Shields, *Docent and Internship Programs Manager*  
 Molly Edgar, *Speakers Bureau Coordinator*  
 Michelle Hagewood, *Tour Scheduler*

## EXHIBITIONS

Nancy Zinn, *Director of Exhibitions, Assistant to the Director*  
 Elizabeth Gordon, *Head of Traveling Exhibitions*  
 Susan Wallace, *Head of Exhibition Scheduling and Graphics*  
 Fred Nitsch, *Graphic Production Artist*  
 Paula Millet, *Chief Exhibition Designer and Production Manager*  
 Danielle Ayers Jones, *Exhibition Assistant*  
 Trent Gates, *Lighting Designer/Supervisor*

Darius Thomas, *Lighting Technician*  
 Asa Osborne, *Manager of Exhibition  
 Production*  
 Wayne Johnson, *Senior Cabinetmaker*  
 Maya Whitner, *Assistant Cabinetmaker*

## FACILITIES

Emory Bowie, *Facilities Manager*  
 Max Gasker, *Head Engineer*  
 Robert Catlin, *Senior Engineering  
 Technician*  
 Joseph Moran, *Engineering Technician  
 Assistant*

## Maintenance/Custodial

### Assistants

Alonzo Bacon  
 Leon Berry  
 Walter Cain  
 Jemal Cherry  
 Randolph Hammett  
 Timothy Mason  
 Thelma Mitchell  
 William Murray  
 Donald Parker  
 Donnie Saxon  
 Susana Williams

## INFORMATION TECHNOLOGY

Nancy Pinn, *Director of Information  
 Technology*  
 Henry Alperovich, *Network  
 Administrator*

## MARKETING, HOSPITALITY, AND SECURITY SERVICES

Michael Smith, *Director of Marketing  
 and Communications*  
 Chris Kunkel, *Head of Hospitality and  
 Security Services*  
 Ronald Gardner, *Assistant Manager of  
 Hospitality and Security Services*  
 Ryan Brown, *Assistant Supervisor,  
 Hospitality*  
 Johanna Biehler, *Senior Graphic  
 Designer*  
 Amy Mannarino, *Public Relations  
 Manager*  
 Wade Price, *Manager of Group Sales*  
 Dale Griffin, *Manager of Visitor Services*  
 Gregory Rago, *Publications Coordinator*

### Security

Rodney Brown, *Supervisor*  
 Lois Guy, *Supervisor*  
 Moses Hunter, *Supervisor*  
 Donald Addison, *Security Officer*  
 Harry Birch, Jr., *Security Officer*

Ed Brown, *Security Officer*  
 Charles Bullock, *Security Officer*  
 Dennis Cloutier, *Security Officer*  
 Stanley Ferguson, *Security Officer*  
 Joseph Franks, *Security Officer*  
 Terrence Gallagher, *Security Officer*  
 Alexander Gough, *Security Officer*  
 Linda Hanna, *Security Officer*  
 Johnny Harrison, *Security Officer*  
 Mark Kooi, *Security Officer*  
 Patricia Lockhart, *Security Officer*  
 Harry Mackey, *Security Officer*  
 Christina McDaniel-Santos, *Security  
 Officer*  
 Mical Mershon, *Security Officer*  
 John Monti, *Security Officer*  
 Jerry Moseley, *Security Officer*  
 Mary Page, *Security Officer*  
 Gina Roberts, *Security Officer*  
 Ronald Savage, *Security Officer*  
 Reginald Simms III, *Security Officer*  
 Owen Stokes, *Security Officer*  
 Elizabeth Thyberg, *Security Officer*  
 Ebony Wiley, *Security Officer*



# VOLUNTEERS

## AFRICAN AMERICAN STEERING COMMITTEE

### Chairperson

Ms. Merlene Adair

### Vice-Chairperson

Mr. Marco K. Merrick

### Members

Mr. Calvin H. Baker

Mr. Michael A. Brown

Ms. C. Sylvia Brown

Mr. Lester Buster

Ms. Madelyn Clark-Robinson

Ms. Lorraine Cornish

Ms. Brenda Covington

(Member And Representing The  
Honorable Joan Pratt)

Dr. Robert Feinberg

Ms. Jeanette B. Garrett

Ms. Diane Gordy

Ms. Harriet Griffin

The Honorable Helen L. Holton—  
ex-officio

The Honorable C. Yvonne Holt-Stone

The Honorable Julian L. Lapides

Ms. Barbara J. Lee

Mr. Bernard Manekin

Mr. John H. Morris, Jr. Esq.

Mr. Ackneil M. Muldrow II

Ms. Jai Elyn Obey

Dr. Edna O'Connor

Ms. Jean B. Owens

Ms. Aleta Parrish

Mr. William Paternotte

Ms. Ann Pettijohn

Ms. Elizabeth M. Ramsey

Mr. Vernon A. Reid

Ms. Patricia Grimmert Smith

Dr. Freeda E. Thompson

Ms. Rita B. Turner

Mrs. Judy Van Dyke

Ms. Donna C. Wilson

## WILLIAM T. WALTERS ASSOCIATION

Special thanks to the William T. Walters Association for their commitment and dedication in assisting the Annual Giving campaign efforts for 2005.

Michael B. Glick, *Chair*

John C. Acker

Frank Andrew

Joanne Belgrad

H. Ward Classen

Mark M. Deering

Frederic Grant Emry II

J. Jeffrey Fox

Jay H. Gouline

Lee Hare

Brian P. Harrington

Timothy Hathaway

Marianne Schmitt Hellauer

Larry Leitch

Charles Nabit

Anne O'Brien

Eileen Day O'Brien

Eric Orlinsky

Anna Z. Pappas

Robert Priest

Judy Siegel

## WOMEN'S COMMITTEE OF THE WALTERS ART MUSEUM

### Chairperson

Mrs. John M. Bond, Jr.

### Friday Program Chairmen

Mrs. Samuel Wing Byram

Mrs. Leon Kaplan

### Saturday Party Chairman

Mrs. John G. Ford

### Jewelry fair Chairman

Mrs. Charles A. Rhode

### Active Members

Mrs. Wm. Ross Adams

Mrs. Herbert P. Bangs

Mrs. R. Peter Bosworth

Mrs. Fred M. Brosi, Jr.

Mrs. Brian P. Curry

Mrs. David F. Dalury

Mrs. William J. Donohue

Mrs. Randal B. Etheridge  
 Mrs. R. Hugh Fitzpatrick  
 Mrs. Jean Geesey  
 Ms. Joanna D. Golden  
 Mrs. Douglas Hamilton, Jr.  
 Mrs. Edward G. Hart III  
 Mrs. Douglas M. Hoffberger  
 Mrs. Patrick D. Jarosinski  
 Mrs. Peter T. Kandel  
 Mrs. John I. Leahy, Jr.  
 Mrs. Thomas E.D. Millspaugh  
 Mrs. Paul V. Niemeyer  
 Mrs. Douglas A. Nyce  
 Mrs. John B. O'Donnell  
 Mrs. Jeffrey C. Palkovitz  
 Mrs. David G. Phillips  
 Mrs. Peter St. John Reid

Ms. Wendy S. Rosen  
 Mrs. J. Thayer Simmons  
 Mrs. Peter Van Dyke  
 Mrs. Stephen B. Waters  
 Mrs. Hiram W. Woodward, Jr.

### Associate Members

Mrs. Aristides C. Alevizatos  
 Mrs. Mahlon Apgar IV  
 Mrs. Christopher H. Bartlett II  
 Mrs. David W. Barton, Jr.  
 Mrs. David E. Belcher  
 Mrs. Herbert J. Belgrad  
 Mrs. John M. Black  
 Mrs. William R. Brody  
 Mrs. Daniel J. Canzoniero  
 Mrs. Cato D. Carpenter  
 Mrs. Andrew J. A. Chriss  
 Mrs. Benjamin R. Civiletti  
 Ms. Sidney E. Daniels  
 Mrs. Richard S. Davison  
 Mrs. Richard Eliasberg  
 Mrs. Donald T. Fritz  
 Mrs. C. Richard Gamper, Jr.  
 Mrs. Austin H. George  
 Mrs. Kenneth C. Gertsen  
 Mrs. Sherlock S. Gillet, Jr.  
 Mrs. Joseph C. Haberman  
 Mrs. Samuel K. Himmelrich  
 Mrs. C. Peter Hoffberger  
 Mrs. Harris Jones, Jr.  
 Mrs. Ernest Kovacs  
 Mrs. Lemuel A. Lewie, Jr.  
 Mrs. John H. Lewin, Jr.  
 Ms. Mary-jo Mather

Mrs. Patricia D. McPhail  
 Mrs. Michael A. Meredith  
 Mrs. Jan M. Minkowski  
 Mrs. William P. Murphy  
 Mrs. R. Bentley Offutt  
 Mrs. Brian H. O'Neil  
 Mrs. Harry P. Pappas  
 Mrs. William M. Passano, Jr.  
 Mrs. Beth G. Pierce  
 Ms. Joan L. Rambo  
 Mrs. Kathryn Coke Rienhoff  
 Mrs. Charles H. Salisbury, Jr.  
 Mrs. Neal W. Salomon  
 Mrs. Thomas E. Schwark  
 Mrs. Stephen T. Scott  
 Mrs. Steven M. Stanley  
 Mrs. M. Barry Strudwick  
 Mrs. James A. Ulmer III  
 Mrs. Douglas Warner, Jr.  
 Mrs. LeBaron S. Willard, Jr.  
 Mrs. Jerry M. Wimberley

### DOCENTS

#### Docent Executive Committee 2005

Barbara Simmons, *President*  
 Joan Sobkov, *Vice President*  
 Barbara Guarnieri, *Secretary*  
 Patricia Smith, *Treasurer*

Julianne Alderman  
 Marian Altoz  
 Herman Bainerd  
 Joanne Belgrad  
 Marie Bergbauer



Reeva Bernhardt  
Sherryll Braggio  
Angela Breakey  
Sharon Britton  
Michael Brush  
Mary Ellen Bur  
Marjorie Byers  
Jane Calegari  
Marion Carozza  
Dorothy Cherry  
Ilene Cohen  
Walter Dandy, Jr.  
Elizabeth Davidson  
Rosemary Eck  
Diane Eckholdt  
Carrie Emerson  
Mary Eyring  
Vernon Fains  
Betty Feinberg  
Irene Friedman  
Carol Gertsen  
Judith Gluckman  
Marsha Golob  
Hannah Gould  
Harriet Griffin  
Jane Habig  
Lynn Hall  
Nancy Hall  
Erin Hayden  
Annette Heaps  
Ingrid Herrera  
Sandra Hittman  
Zelma Holzgang  
Amy Huntoon  
Lois Kyler  
Christine Lambrou

Shelli Lubetkin  
Sara Lycett  
Michael Maglia  
Susan Markowitz  
Paul McAdam  
Patricia McCall-Pacquin  
Marie-Claude McKie  
Linda Miller  
Francine Mittelman  
Karen Motyka  
Susan Noonan  
Frona Ottenheimer  
Janice Perdue  
Barbara Pour  
Virginia Probasco  
Virginia Raleigh  
Elizabeth Ramsey  
Adele-Ethel Reidy  
Carol Schimpff  
Sandra Schmidt  
Susan Schuster  
Eleanor Schwark  
Betty Schweitzer  
Aaron Seiden  
Herbert Silverman  
Jacqueline Slavney  
Charles Springer  
Janet Steinberg  
Barbara Sterne  
Helen Szymkowiak  
Kay Terry  
Freeda Thompson  
Thérèse Ulmer  
Joan Urbas  
Françoise von Mayer  
Gale Walker

Paula Warner  
Louise White  
Elaine Zieve

### **Emeritus Docents**

Ellen Aisenberg  
Willa Banks  
Mary Beere  
Marjorie Bleul  
Virginia Campbell  
Jane Champ-Payne  
Jean Clinnin  
Rosalee Davison  
Carol Durr  
Berthe Ford  
Janice Harwood  
Norma Haught  
Sherri Hershfeld  
Mary Gray  
Patricia Karey  
June Lawry  
Mary Alma Lears  
Reva Lewie  
Martha Lohmeyer  
Benita Low  
Rita Lowenstein  
Elinor Mayer  
Dorrie Mednick  
Charlotte Miller  
Barbara Olgeirson  
Sandra Rosenberg  
Joanne Rosenthal  
Marilyn Scher  
Katherine Schwabe  
Germaine Sharretts

Miriam Shear  
Erma Sigler  
Martha Sinis  
Mary Skinner  
Virginia Southard  
Anne Strickland  
Jane Stricklen  
Anita Wagenheim  
Annelies Zachary

## INTERNS

Rebekah Badwa  
Jason Batoff  
Jennifer Beck  
Jennifer Berger  
Angelle Bonnacarrere  
Kenya Brown  
Erica Buentello  
Lynda Cooper  
Katie Crooks  
Heather Egan  
Elyssa Elhai  
Erin Fostel  
Lauren Hartmann  
Emily Herman  
Charles Keyser  
Angeliki Kokkinou  
Stephanie Latini  
Laura Murphy  
Jennifer Namsiriwan  
Richard Reichley  
Michael Reinhardt  
Charlotte Riggs  
Shirleen Selim  
Michelle Vinchkowski  
Jessica Weglin



## VON HESS FOUNDATION GRADUATE STUDIES INTERNS

Tim Zerkel

## DIVERSITY IN THE ARTS INTERNS

Erica Baytop  
Helina Metaferia  
Monica Wright

## VOLUNTEERS

Jessica Baldwin  
Emily Bergbauer  
Jocelyn Durkey  
Sara Fiori  
Daniel Lemke

Casey Lichtman  
Elizabeth Moore  
Alexandra Small

## MEMBERSHIP VOLUNTEERS

Arthur E. Christenson  
Marianne M. Jones  
Barbara Ann Laukaitis  
Adrienne Noonan  
Molly & Andrew Sacamano  
Diane Scharper  
Isobel Triggs

## VISITOR SERVICES VOLUNTEERS

Ellen Aisenberg  
Marion E. Altoz  
Marsha Ames  
John Arbelada  
Fikremariam Asres  
Jean Harper Baer  
Mori Behmanesh  
Richard P. Behrens  
Marc Bonnenfant  
Marilyn Cameron  
Cecile DeFord  
Millie Fisher  
Edna Fowler  
Nancy Fulton  
Anne Graeber  
Polly Gregory  
Rebecca Hamer  
Noreen Herbert  
John Hines  
Helen Hurst  
Carolyn Johnson  
Marla Krogh  
Stephen S. Knipp  
Rachel Layton  
Ann Lilly  
Margaret MacTiernan  
Anna McKnight  
Mary Michels  
Margaret Walker Mott  
James Nagel  
Marc Romanych  
Rona Shapiro  
Ben H. Smith, Jr.

Marcia Strok  
Carol R. Taylor  
Loretta Taymans

## VISITOR SERVICES STUDENT INTERNS

Emily Beaumiser  
Ellen Brooks  
Adam Bulkley  
Zoe Dolan  
Akpanoluo Etteh Jr.  
Erin Murray  
Tanvi Trivedi

## MUSEUM STORE VOLUNTEERS

Marion Cohen  
Marion Carozza  
Frances Fant  
Sylvia Himmelfarb  
Natasha Mathias  
Betty Pause  
Sandy Schmidt  
Gene Sweetland  
Pearl Walsh

## PLANNED GIVING ADVISORY COUNCIL

### Chairperson

John P. Edgar, Esq.

### Members

Gary R. Anderson, JD, CPA  
David T. Askin, CPA  
Patricia Bentz

Max E. Blumenthal, Esq.  
Neal D. Borden, Esq.  
David W. Britton, Jr. Esq.  
John A. Cogar, Esq.  
Richard J. Dumais, Esq.  
Carl A. Eastwick, Esq.  
John A. Gilpin, Esq.  
Sandra P. Gohn, Esq.  
Rene J. Gunning, Jr.  
Marianne Schmitt Hellauer, Esq.  
Thomas R. Kelley, CPA  
Stanard T. Klinefelter, Esq.  
Arnold H. Koonin, CPA  
Michael I. Levine  
Brian Meritt, CPA  
Andrew G. Nichols  
Eileen D. O'Brien, Esq.  
A. MacDonough Plant, Esq.  
Jeffrey J. Radowich, Esq.  
George K. Reynolds III, Esq.  
Lynn B. Sassin, Esq.  
William E. Scholtes, Esq.  
Mary Alice Smolarek, Esq.  
S. Allen Snook  
C. Van Leuven Stewart, Esq.  
Shale D. Stiller, Esq.  
M. Barry Strudwick  
Adena W. Testa, Esq.  
Henry B. Thomas  
Bonnie A. Travieso, Esq.  
William C. Trimble, Jr., Esq.  
James M. Webster, Jr.  
Lynn Wintriss, Esq.

# BOARD OF TRUSTEES



## OFFICERS

Robert S. Feinberg, *Chair*  
William L. Paternotte, *President*  
James H. DeGraffenreidt, Jr., *Vice-President*  
Andrea B. Laporte, *Vice-President*  
Nancy R. Sasser, *Vice-President*  
Dr. Hervey (Peter) S. Stockman, Jr.,  
*Vice-President*  
Kenneth A. Bourne, Jr., *Treasurer*  
Dr. Gary K. Vikan, *Secretary*

## MEMBERS

Julianne E. Alderman  
Bruce M. Ambler  
Peter L. Bain  
Calvin H. Baker  
Neal D. Borden, Esq.  
Wendyce H. Brody  
Michael A. Brown, Esq.  
C. Sylvia Brown  
Rosalee C. Davison  
John Gilmore Ford  
Laura L. Freedlander  
Hannah B. Gould  
Nancy H. Hall

Douglas W. Hamilton, Jr.  
The Honorable C. Yvonne  
Holt-Stone  
Mary C. Mangione  
Patricia B. Modell  
E. Rogers Novak, Jr.  
Marilyn A. Pedersen  
William H. Perkins  
George A. Roche  
Edward L. Rosenberg  
Thomas Schweizer, Jr.  
Mayo A. Shattuck III  
Jerome D. Smalley  
Sudhir M. Trivedi  
Judy Van Dyke  
Dr. Daniel H. Weiss  
Mary Baily Wieler

## EX-OFFICIO

The Honorable Martin J. O'Malley  
Governor Robert L. Ehrlich, Jr.  
The Honorable James T. Smith, Jr.  
The Honorable Sheila H. Dixon  
Michael J. Abromaitis, Esq.  
Merlene E. Adair  
Ann Beegle  
Elizabeth O. Bond

Leslie R. Doggett  
William B. Gilmore  
Michael B. Glick  
Barbara Simmons

## EMERITI

Samuel K. Himmelrich, Sr.  
Bernard Manekin  
Cynthia R. Mead  
Adena W. Testa, Esq.  
Jay M. Wilson

## INTERNATIONAL ADVISORY BOARD

Eddie C. Brown  
Dr. Myrna Bustani  
Dr. David C. Driskell  
Sam Fogg  
Bruce Livie  
Dr. James Marrow  
George M. Sherman  
John and Marisol Stokes  
Benjamin B. Zucker

## THE WALTERS ART MUSEUM

## STATEMENTS OF FINANCIAL POSITION

June 30, 2005 (With Comparative Totals for June 30, 2004)

	2005	2004
<b>ASSETS</b>		
Cash and cash equivalents	\$ 347,359	\$ 502,484
Accrued investment income	287,645	285,259
Grants and accounts receivable	187,719	156,074
Inventories, at lower of cost (first-in, first-out method) or market	270,575	269,124
Prepaid expenses	263,483	188,983
Investments, at fair value	75,081,568	72,303,938
Unconditional promises to give, net	3,472,871	3,555,848
Buildings and equipment, at cost, net	36,362,902	36,840,163
<b>Total assets</b>	<u>116,274,122</u>	<u>114,101,873</u>
<b>LIABILITIES AND NET ASSETS</b>		
Liabilities		
Accounts payable and accrued expenses	\$ 862,187	\$ 504,686
Note payable, bank	285,000	1,325,000
Long-term debt	78,232	154,734
Deposits and memberships received in advance	356,034	236,169
Annuity obligation	81,000	69,756
<b>Total liabilities</b>	<u>1,662,453</u>	<u>2,290,345</u>
Net Assets		
Unrestricted		
Operating (deficit)	\$ (187,119)	\$ (313,466)
Board designated for long-term investment	17,943,958	17,293,239
Net investment in plant	35,999,670	35,360,429
Walters Art Gallery Endowment Foundation	3,460,637	3,351,439
	57,217,146	55,691,641
Temporarily Restricted	10,886,333	13,139,457
Permanently Restricted	46,508,190	42,980,430
<b>Total net assets</b>	<u>114,611,669</u>	<u>111,811,528</u>
<b>Total liabilities and net assets</b>	<u>\$ 116,274,122</u>	<u>\$ 114,101,873</u>

## THE WALTERS ART MUSEUM

## STATEMENTS OF ACTIVITIES

Year Ended June 30, 2005 (With Comparative Totals for the year ended June 30, 2004)

	2005	2004
Revenues, gains and other support:		
Investment income	\$ 1,907,446	\$ 1,799,149
Grant income		
Baltimore City	664,489	699,400
Other public grants	1,287,292	1,207,179
Private grants	1,336,058	1,033,569
Contributions	3,151,623	6,026,498
Change in value of annuity obligation and contribution	163,666	299,799
Realized gains (losses)	775,369	1,552,861
Unrealized appreciation (depreciation)	1,940,734	4,103,654
Annual giving	1,381,623	1,272,763
Membership	610,044	525,062
Museum store	653,941	980,363
Employee benefit contributions	1,829,701	1,852,031
Admissions - special exhibits	205,144	654,696
Admissions - general	62,067	102,914
Exhibit rental	103,918	359,083
Other income	683,655	853,566
<b>Total revenue, gains, and other support</b>	<b>16,756,770</b>	<b>23,322,586</b>
Expenses		
Curatorial	2,057,733	1,783,490
Conservation	685,666	589,489
Exhibitions	1,016,759	2,119,495
Education	797,447	752,428
Development and membership	1,129,190	1,206,932
Marketing and communications	723,026	957,609
Management, building, and security	6,641,359	6,848,182
Museum store	492,733	768,687
Accessions	412,716	396,860
<b>Total expenses</b>	<b>13,956,629</b>	<b>15,423,172</b>
<b>Change in net assets</b>	<b>2,800,141</b>	<b>7,899,414</b>
Net assets at beginning of year	111,811,528	103,912,114
Net assets at end of year	<u>\$ 114,611,669</u>	<u>\$ 111,811,528</u>

# INDEX OF ARTWORKS

COVER: Alfred Sisley, *The Terrace at St-Germain: Spring*, 1875

PAGE 2: Léon Bonvin, *Still Life: Wine, Water, Fruit, and Nuts*, 1864

PAGE 4: George Stubbs, *Mares and Foals*, 1762, oil on canvas, Reproduced by permission of the Trustees of the Rt. Hon. Olive, Countess Fitzwilliam's Chattels Settlement, and Lady Juliet Tadgell

PAGE 5, TOP: George Stubbs, *Whistlejacket*, ca. 1762, oil on canvas, © The National Gallery, London. Bought with the support of the Heritage Lottery Fund, 1997

PAGE 5, BOTTOM: India (Rajasthan or Madhya Pradesh), *A Maiden, a Monkey, and the Mango Tree*, ca. 850

PAGE 6: Honoré Daumier, *The Omnibus*, 1864, watercolor on paper

PAGE 7: Armenian, *Decorated Page Beginning the Gospel of Matthew*, 1475

PAGE 14: *Icon of Saint Peter*, Macedonian, 14th century, tempera and gilding on wood, Dumbarton Oaks, Byzantine Collection, Washington, D.C.

PAGE 15: Jean-François Millet, *Shepherdess and Her Flock*, ca. 1865, pastel on paper

PAGE 16: Pierre Étienne Théodore Rousseau, *Early Summer Afternoon*, late 1850s

PAGE 17: India, *Layla and Majnun fall in love at school*, ascribed 'amal-i Dharmadasa, Folio 98a, 1590s

PAGE 18: George Stubbs, *Gimcrack on Newmarket Heath, with a Trainer, a Stable-Lad, and a Jockey*, 1765, oil on canvas, The Woolavington Collection

PAGE 19: Léon Bonvin, *Canterbury Bells*, 1863, watercolor

PAGE 20: India, *Saddened by the news of Khusraw's marriage to Shakar, Shirin takes a ride with her maids and meets the sculptor Farhad*, ascribed 'amal-i Sanvala, Folio 59a, 1590s

PAGE 21: Charles François Daubigny, *The Coming Storm, Early Spring*, 1874, oil on panel

PAGE 22: Byzantine (Constantinople), *Relief of the Virgin as Intercessor*, mid-11th century, marble, IL.2005.2.17, on loan from Dumbarton Oaks, Washington, D.C.

PAGE 23: George Stubbs, *Mares and Foals*, 1763–1765, oil on canvas, Tate, London. Purchased with assistance from the

Pilgrim Trust, 1959

PAGE 24: Narcisse Virgile Diaz de la Peña, *Forest of Fontainebleau, Autumn*, 1871

PAGE 25: Constant Troyon, *Coast Near Villers*, ca. 1859, oil on canvas

PAGE 26: Edgar Degas, *Ballet Dancer Standing*, 1897–1900, pastel and charcoal on heavy-weight wove paper, BMA 1950.12.659

PAGE 27: George Stubbs, *Horse and Lion*, 1762–68, oil on canvas, Yale Center for British Arts, New Haven. Paul Mellon Collection

PAGE 28: George Stubbs, *Lord Torrington's Hunt Servants Setting Out from Southill Bedfordshire*, 1767, oil on canvas. Private Collection

PAGE 29: Louis-Eugène Boudin, *Trouville*, 1871, oil on panel

PAGE 32: Jean-Auguste-Dominique Ingres, *The Architect André-Marie Chatillon*, 1810 Graphite on cream light-weight wove paper, BMA 1979.43

PAGE 34: Jules-Adolphe-Aimé-Louis Breton, *Returning from the Fields*, 1871, oil on canvas

PAGE 36: Jean-François Millet, *The Goose Girl*, 1863, oil on canvas

PAGE 38: Edgar Degas, *Head of a Roman Girl*, ca. 1856, conté crayon with stumping on pale beige moderately light-weight wove paper, BMA 1950.12.457